



Baba Marbles on display with the Kinetic facade by Dipen Gada and Associates

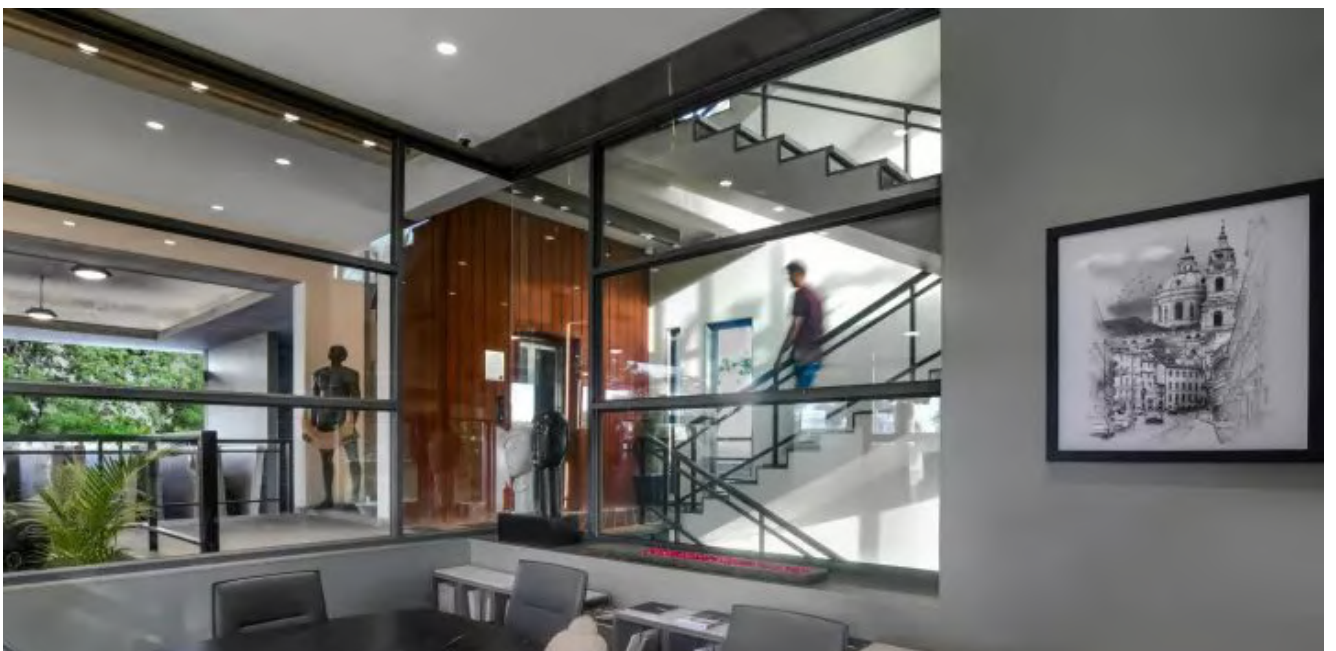


Architecture firm Dipen Gada and associates have designed Baba Marbles, a commercial store selling a variety of stones and marbles in Vadodara city of Gujarat. As every architectural project comes with opportunities to be creative and thinks out-of-the-

box, this one came with one too. These opportunities often referred to as design constraints are a part of the process and for the marble project, the area of the site was the major constraint.



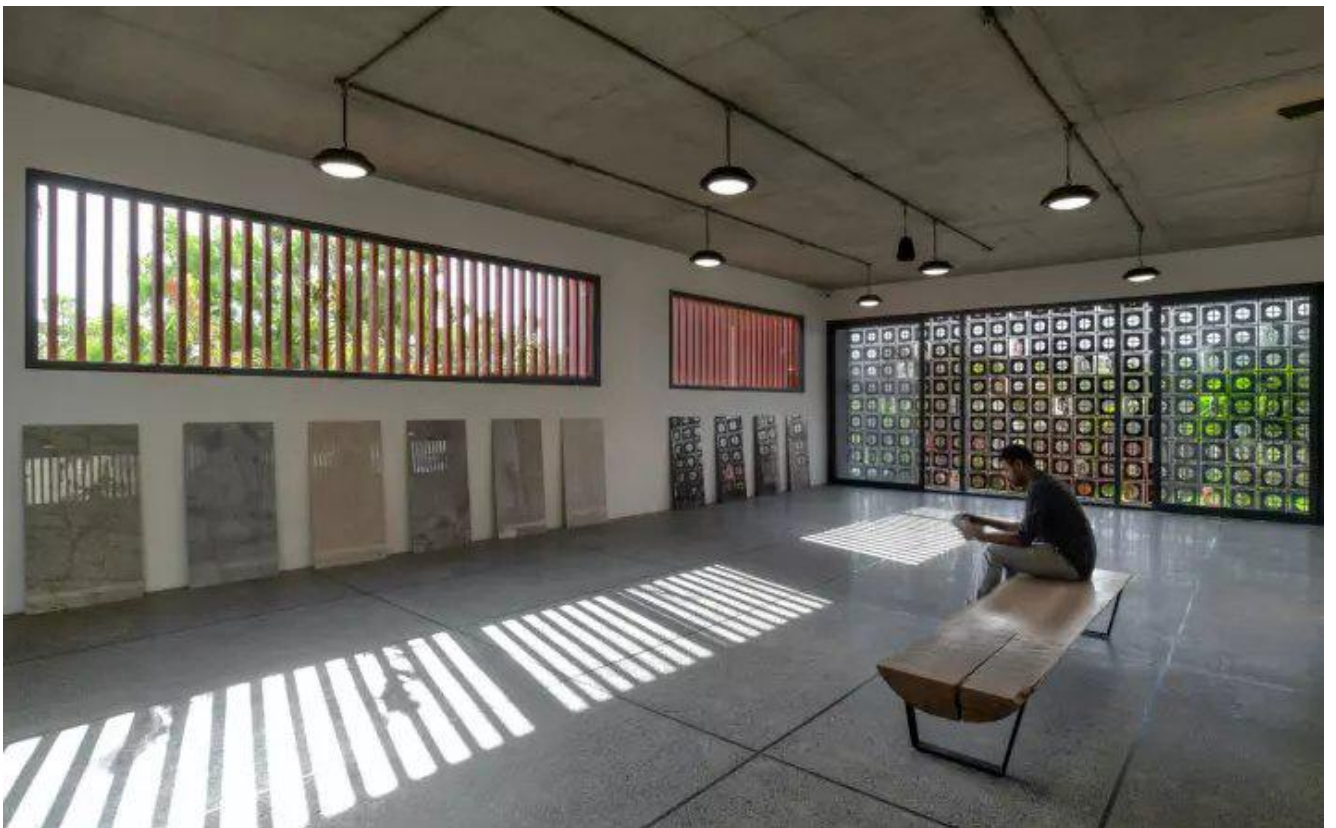
Any store with display as its key design feature requires more spread area than usual and for Baba marbles, the architects were only available with 4000sq ft plinth area out of a total 9805sq ft site area leaving all the setbacks according to the set standards. To accommodate all the variety of materials for display and to rectify the problem of spread area constraint, the team decided to go vertical both ways.





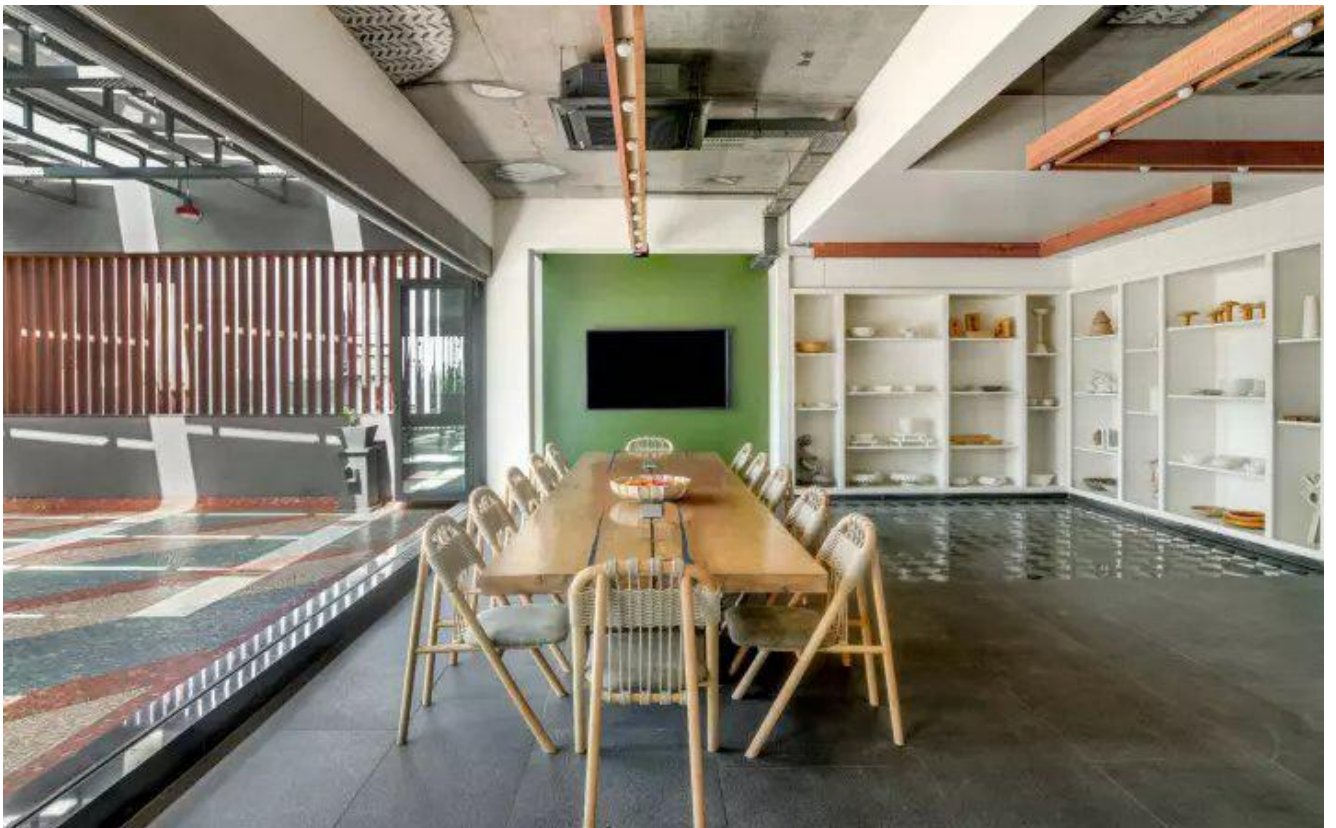


The floors are designed to bear the load of the different marble variants at Baba Marbles. The ground and the first-floor house have the stock of Italian marble on display and the second floor is being used to accommodate the variety of tiles. The third-floor display is divided into halves. One half is dedicated to the display of marble articles and the other half is the terrace area with a solar roof used to fulfill the electric requirements of the building. The basement of the structure is a parking space designed with various wall finishes and is utilized for showcasing Indian stones.





The team of Dipen Gada has ensured to conceptualize the Baba Marbles project focused on promoting Indian materials which is also the forte of the store owner. The collection reflects different types and finishes available in the Indian variety and promotes its usage to the clientele.





The core material used for designing is exposed concrete that is intricately detailed and brings out the structure. To enhance the aesthetics the architect has incorporated the concept of the kinetic facade with playful use of glass openings on the front facade on the northern side. The glass openings are covered with stone screens that form different textures concerning wind movement. Two different textured materials – Agra stone and Burnt Black granite, are used in the facade creating a circular pattern. Bigger punctures at the lower level and smaller punctures at the top level are made to create a cutting-edge pattern.





The kinetic facade of Baba Marbles forms a different sciography and regulates the proper influx of light in the interiors on each floor. The side facades are clad with strips of red Agra stone to instill a volumetric effect to the whole structure and create a floating effect after the first floor. Each floor reflects a different character concerning the material that is being showcased. The materials that are used for construction by Dipen Gada and associates are true to their natural existence and comply with the sustainable design aspects of any design.



Fact Sheet

Project Name: Baba Marbles

Location: Vadodara, Gujarat

Firm Name: Dipen Gada and Associates

Design Team: Dipen Gada, Samarth Savla, Prakash Prajapati

Total Site Area: 9,805 Sq. Ft

Image Credits: Sudhir Parmar

Written by Aastha Trivedi

Related Posts





Studio Palasa by sibling duo Prinston and Preine unleashes the new realms of planters

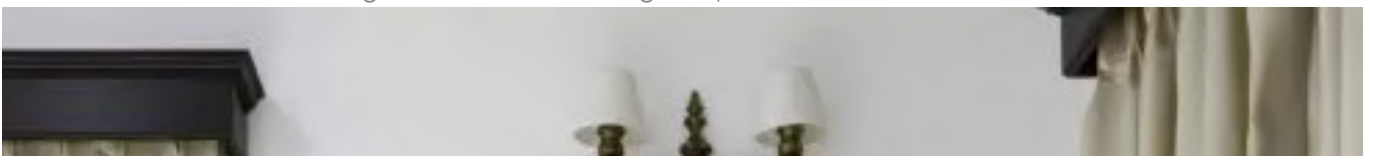
Studio Palasa uncovers the newly designed planters in their recent 'The Lagom collection. The duo siblings keep the design inclusive of nature's element in each of their pieces that depicts their inner soul that has love for nature and design.





RR decor launches its Masaya and Mahaba collections

RR Decor launches Mahaba and Masaya collection that withstands its excellent craftsmanship. Designed with modern sensibilities and alluring looks, the fabrics have a feel of warmth yet a bold effect. RR Decor fabrics begin its life in the design department, where a team of artists.





Temple Town Launches an exquisite range of Accent Chairs

Temple town exhibits its new range of accent chairs that have an alluring upholstery and extraordinary design. The furniture is consciously designed and can be customised according to the needs of the future.



Rosha India unveils the Ultimate Festive Lighting Solution for the festive mood

Rosha has been a leading manufacturer in lamps and produces some outstanding quality lighting solutions. This festive season bring home Rosha's lamps that are available in a variety of high-quality materials ranging from metal, brass, crystal.

News





Studio Palasa by sibling duo Prinston and Preine unleashes the new realms of planters

Studio Palasa uncovers the newly designed planters in their recent 'The Lagom' collection. The duo siblings keep the design inclusive of nature's element in each of their pieces that depicts their inner soul that has love for nature and design.





RR decor launches its Masaya and Mahaba collections

RR Decor launches Mahaba and Masaya collection that withstands its excellent craftsmanship. Designed with modern sensibilities and alluring looks, the fabrics have a feel of warmth yet a bold

effect. RR Decor fabrics begin its life in the design department, where a team of artists.



Temple Town Launches an exquisite range of Accent Chairs

Temple town exhibits its new range of accent chairs that have an alluring upholstery and extraordinary design. The furniture is consciously designed and can be customised according to the needs of the future.

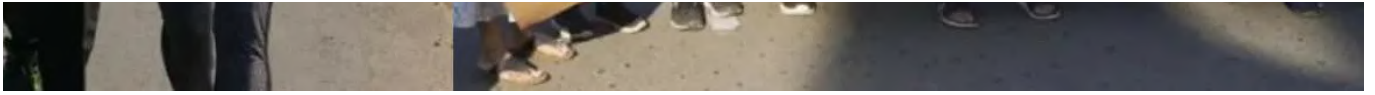


Rosha India unveils the Ultimate Festive Lighting Solution for the festive mood

Rosha has been a leading manufacturer in lamps and produces some outstanding quality lighting solutions. This festive season bring home Rosha's lamps that are available in a variety of high-quality materials ranging from metal, brass, crystal.

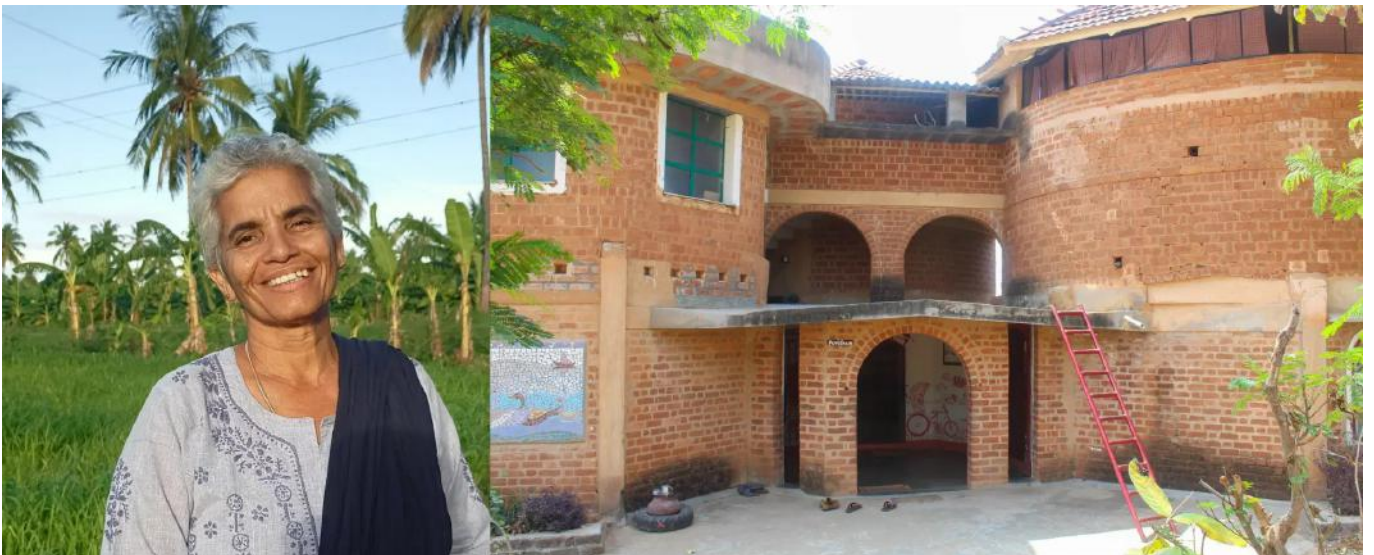
Architect Talks





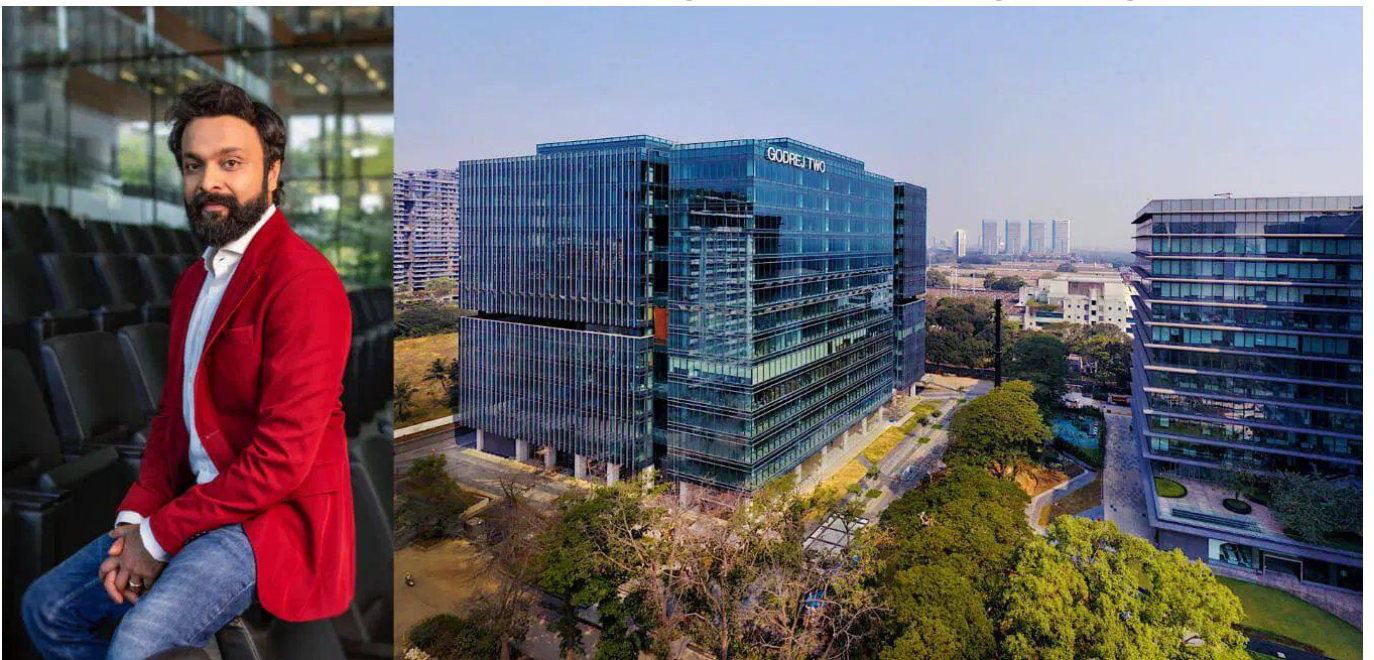
Gita Balakrishnan elucidates her experiences of Madhya Pradesh during Walk for Arcause campaign

Architect Gita Balakrishnan is a Kolkata-based architect and founder of Ethos that is working towards instilling architecture and its impact in everyone related to the fraternity and bringing together architects, students, and professionals working in the built environment. She has taken



Ar. Meenakshi Umesh, The Architect Who Is Changing The Way We Look At Architecture

Meet Ar. meenakshi umesh, the founder and head of multi-disciplinary practice mudhive, based in Dharmapuri district, Tamil Nadu. She works on different ideas and concepts which are the combination of sustainable and eco friendly ideologies. She believes that good design



'The Trees in Vikhroli' retaining the Greens

Meet Anubhav Gupta Chief Executive Officer Vikhroli, Chief CSR & Sustainability Officer, Godrej Properties. Founder – GPL Design Studio- – a unique, multidisciplinary innovation engine which bridges the gap between architects and developers by creating a robust ecosystem for design,



"Girls Only" in Moscow by Ar. Valeriya Moskaleva of Design Studio

The Décor Journal India in conversation with Ar. Valeriya Moskaleva of Design Studio on the completion of their new project titled as "Girls Only" in Moscow. Q. How did the space come about? What were the discussions with the client

Projects



Designer's Circle SERENITY brings home the warmth with a single palette of shades

Designed by Ar Rajesh Sheth of Designer's Circle that truly stands by the word serenity. The bedrooms are kept minimal to their function as per user's personal requirements while the textural elements adds grace to the overall look.



Colina G offers a breathtaking view of tropical Greens of North Goa

Colina G has given us some stunning views of paddy fields filled with tropical forest around. bohemian styled balcony to a private pool, you can find everything that has to do with something relaxing and luxury.





Wood amalgamating with mystical hues in this Gurugram home

Design 21 creates an artistic splendour with its sumptuous ambience. The texture and design concept is also consistent throughout the abode. Assembling this 8000 sq.ft. abode is a fine arrangement of neutral hues and sophistication.





Symbiosis International University's new medical wing is a strong form of intriguing design

Symbiosis University Hospital and Research Centre (SUHRC) is a multi-specialty hospital that represents a new and progressive face for healthcare infrastructure in India. Sitting along a slope, the building is strategically positioned.

[Architect Talks](#)

[Architecture Eye](#)

[Projects](#)

[Events](#)

[About](#)

[Disclaimer](#)

[Careers](#)

[Designer Talks](#)

[Style Diaries](#)

[Real Estate](#)

[News](#)

TDJ | THE
DECOR
JOURNAL

Partner With Us



© All rights reserved

