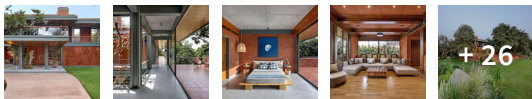




# Nirmal Farm / Dipen Gada and Associates



Save this project



Curated by Hana Abdel

## HOUSES · BHARUCH, INDIA

Architects: [Dipen Gada and Associates](#)

Area: 14000 ft<sup>2</sup>

Year: 2021

Photographs: [Tejas Shah](#)

Manufacturers: [Hansgrohe](#), [D'Écor](#), [Daikin](#), [Hettich](#), Cooline, Deco Art, Piccolo Mosaics, Restile

Structural Engineering: [SVN Consultants](#)

MEP Engineering: [Mars Engineers](#)

### MORE SPECS



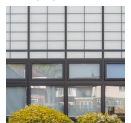
### Recommended Products

#### WINDOWS



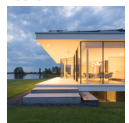
Air-Lux Sliding Window - Curved

#### WINDOWS



Kalwall® Facades - Window Replacements

#### DOORS



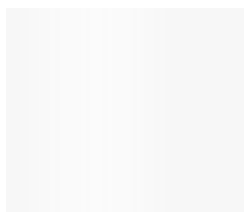
Sky-Frame Insulated Sliding Doors - Sky-Frame...

#### ENCLOSURES / DOUB...



Rodeca Round Facade at Omnisport Arena...

*Text description provided by the architects.* This weekend house for the shah family is situated in the outskirts of [Bharuch](#), Gujarat. Within the dense 50 Year old Chiku plantations which is the main attraction and the challenge while designing the house. Total farm land is about 8 Lakh Sq. Ft out of that we have selected 1,50,00 Sq. Ft of area which is having more than 30 fully grown chiku trees.



### MORE FROM DIPEN GADA AND ASSOCIATES »



Arham House / Dipen Gada and Associates



Dr. Nene's Residence / Dipen Gada and Associates

[More from Dipen Gada and Associates »](#)

### MORE HOUSES



The White House Prahran / Nervegna Reed Architecture + PH Architects



Moonlight Cabin / Jackson Clements Burrows



DM Residence / CUBYC architects bvba

[More Houses »](#)

### MOST VISITED



Aaron's Courtyard / The Design Room



Concrete Blonde House / Carter Williamson Architects



BSPN Residence / 10 Space Architects

### MOST VISITED PRODUCTS



Frameless Sliding Doors - Sky-Frame Original|Sky-Frame



Click Façade System|Technowood

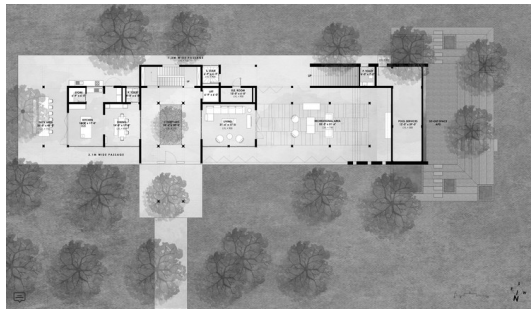


3D Rendering - Student Version|Enscape

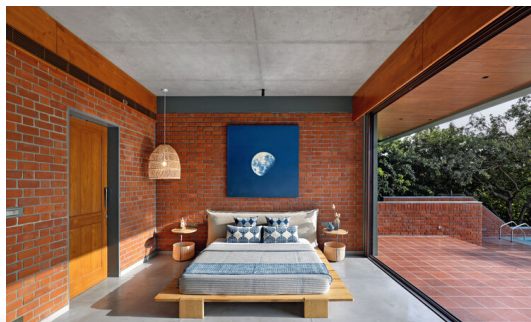
Here in this house, we have tried to play with metal tube as a structural system along with exposed brick work.



**Client brief** - Clients are from the city of **Bharuch** with the background of Industrial fabrication as their core business and passionate for nature living. We have worked for them in past and that enables us to gain faith on our creativity.



**Exterior** - Exterior of the house is linear mass with the development of ground & First level, major elements of facades are Custom made metal column, beams & Expose brick work. The front facade of the house faces North Direction, so we have planned maximum openings towards north side along with huge deck areas in front which allows us to directly connect with landscape. At ground level recreational space is covered by nicely designed perforated screen which is having jungle graphic punctures on it in SW direction. On the eastern part of the house there's a Kitchen & an outdoor dining space at ground level, Home theater & deck area at First level. Southern part consists of major services at ground level & Swimming pool at mezzanine level along with two bedrooms at first level.



By using ArchDaily, you agree to our [Terms of Use](#), [Privacy Policy](#) and [Cookie Policy](#).

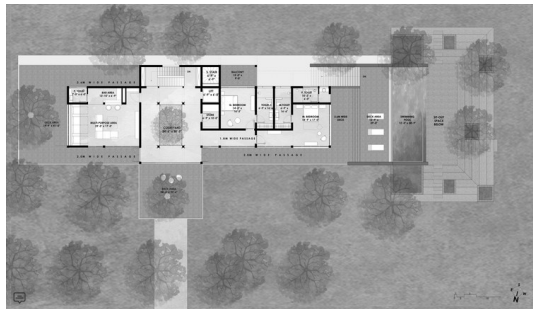
If you want to make the best of your experience on our site, [sign-up](#).

I ACCEPT

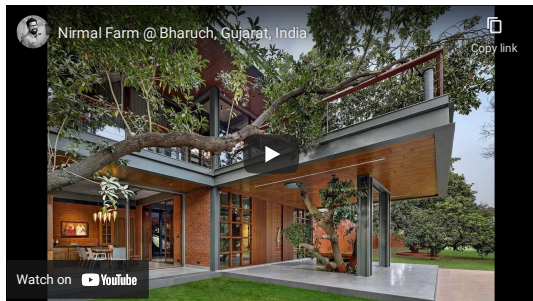
exclusive Outdoor Dining space is there to enjoy the existing treasure of nature around the house. Recreational area which is near to living area, this area is planned for multipurpose use. Recreational area is secured by a perforated metal screen in front which can be opened up completely to connect with front garden. There are few Service areas on the Ground level.



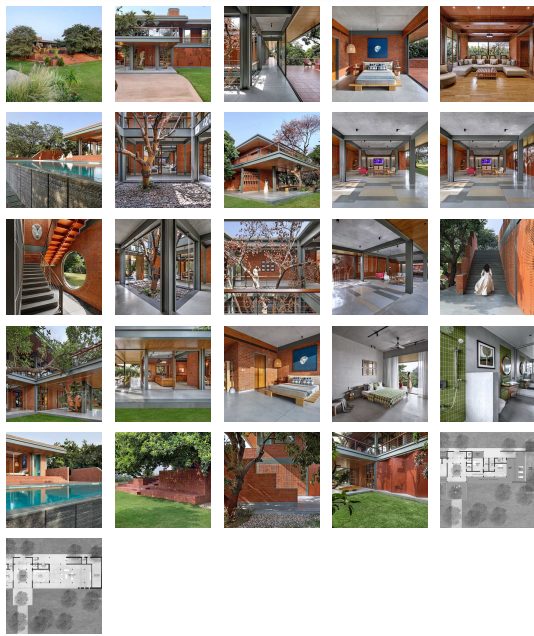
Spaces on upper floor - After climbing up stairs Central courtyard is the arrival point, there's a service store room & a front deck area just above the Entrance. There's home theater area above dining & kitchen area along with huge deck area on eastern side. South western zone is having two bedrooms. One is master bedroom in SW direction which is associated with an infinity pool at mezzanine level. Other bedroom is Guest bedroom.



This house is a kind of perforated house, which is well associated with outdoor indoor and respecting surrounding nature at its best. The treasure of chiku tree has been kept at priority and the house is well pampered by them and having a dialogue between nature and man - made structure.



## Project gallery



About this office



**Dipen Gada and Associates**  
Office

FOLLOW

PRODUCTS

Glass Steel Brick







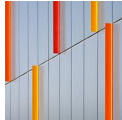





#TAGS

Projects Built Projects Selected Projects Residential Architecture  
Houses Farmhouse On Facebook Brick Houses Bharuch India

Published on July 01, 2021

Cite: "Nirmal Farm / Dipen Gada and Associates" 30 Jun 2021. ArchDaily. Accessed 3 Aug 2021.  
<https://www.archdaily.com/964243/nirmal-farm-dipen-gada-and-associates> ISSN 0719-8884

BROWSE THE CATALOG

<p><b>PARTITIONS</b></p>  <p>Skyfold Vertically Folding Operable Walls - ...</p>	<p><b>GLASS</b></p>  <p>3M Glass Finish - FASARA™ Natural</p>	<p><b>BRICKS</b></p>  <p>Randers Tegli Facing Bricks - Ultima RT 162</p>	<p><b>FAUCETS</b></p>  <p>Dombracht Bathroom Fittings - Deque</p>
<p><b>SEALANTS</b></p>  <p>Kryton Liquid Sealer - Hydrostop</p>	<p><b>BATHROOM ACCESSO...</b></p>  <p>Bradley Corporation ... Hand Sanitizer Dispensers and...</p>	<p><b>METAL PANELS</b></p>  <p>Trimo Trimoterm and Qbiss One in Transport</p>	<p><b>DOORS</b></p>  <p>Sky-Frame Insulated Sliding Doors - Sky-Frame...</p>
<p><b>TENSILE STRUCTURES</b></p>  <p>Lastra y Zorrilla Tensile Architecture: Pressostatic/Inflatabl</p>	<p><b>ENERGY SAVING</b></p>  <p>Lutron Touchless Technology...</p>	<p><b>BULBS / SPOTS</b></p>  <p>iGuzzini Uplight - Lun-Up Evo</p>	<p><b>VENTILATED / DOUBL...</b></p>  <p>Terreal Terracotta Rainscreen - Pitera...</p>

[More products >](#)



Receive ArchDaily updates via email!

By using ArchDaily, you agree to our [Terms of Use](#), [Privacy Policy](#) and [Cookie Policy](#).

If you want to make the best of your experience on our site, [sign-up](#).

I ACCEPT

