

# 30 BEST PENTHOUSES

ELEGANT | ELOQUENT | ELEMENTAL

PENTHOUSE INTERIORS IN INDIA | VOLUME - 1 | 2021-2022



E-BOOK  
DIGITAL COPY



THE  
ARCHITECT'S  
DIARY.COM



288

LANTERN HOUSE

By - S+Ps Architects



108

MANSUKH ROJIWADIA'S PENTHOUSE

By - Dipen Gada & Associates



90

KOTAH PENTHOUSE

By - Studio Yaminl



364

THE TROPICAL PENTHOUSE

By - Treeflight Design



256

THE MODERN PENTHOUSE

By - Rano Singh Of The Muse



60

GRANDEUR OF BUNGALOW IN PENTHOUSE

By - Vishwa Design Studio



## MANSUKH ROJIWADIA'S PENTHOUSE DIPEN GADA & ASSOCIATES

A CLASSIC PENTHOUSE IN AHMEDABAD, THAT STRIKES THE PERFECT BALANCE  
BETWEEN SIMPLICITY AND SOPHISTICATION



Living on the height is always fun and when the developer himself chooses his own living space over building created without anyone else's input, he takes certain freedom as far as space arranging. It was their dream to build their home with soulful approach. It ought to be luxurious and yet one should feel calm and serene. And that's why they have approached us and allowed this chance to work for them.

A granite and ash wood bench provide a measure of privacy by creating a semblance of a foyer just next to the main door. Further inside, a magnificent Ashish Das sculpture of a life sized, winged human figure flanks the open walkway which runs parallel to the living room. This herringbone pattern on the marble floor with veneer panelling overhead to conceal the HVAC, visually demarcates the transition corridor from the adjoining living and dining rooms. However, all these spaces flow into each other to create a large, contiguous area. Like a leitmotif, this pattern is repeated on the glass partition of the kitchen and TV room as well as the partition behind the television sets in the living/dining areas.

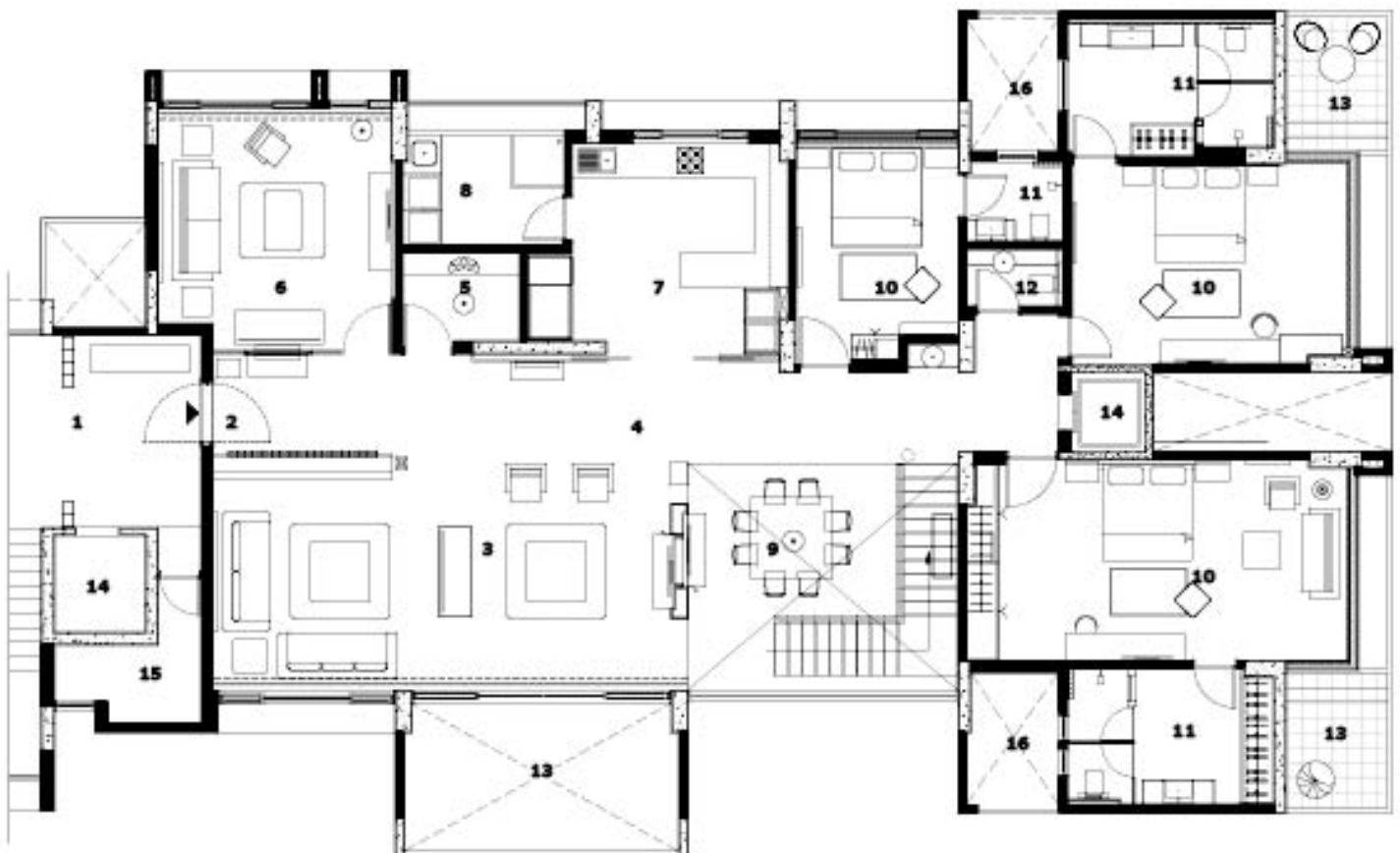
### PRODUCTS & MATERIALS:

**Lighting** – Hybec Pro | **Sanitary Ware** – Toto, Duravit  
**Windows - Aluminium Furniture** – China Based Brands(Ready),  
Onsite By Omprakash Mistry | **Flooring** – Italian Marble |  
**Paint** – Asian Paints | **Artefacts** – At Home



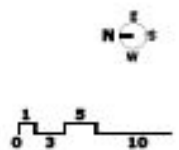
# LAYOUT

The ground floor houses the living room, dining area, TV room, kitchen, powder room, guest room and the parents' room. The son and daughter's bedrooms together with the home theatre and a terrace are located on the upper floor.

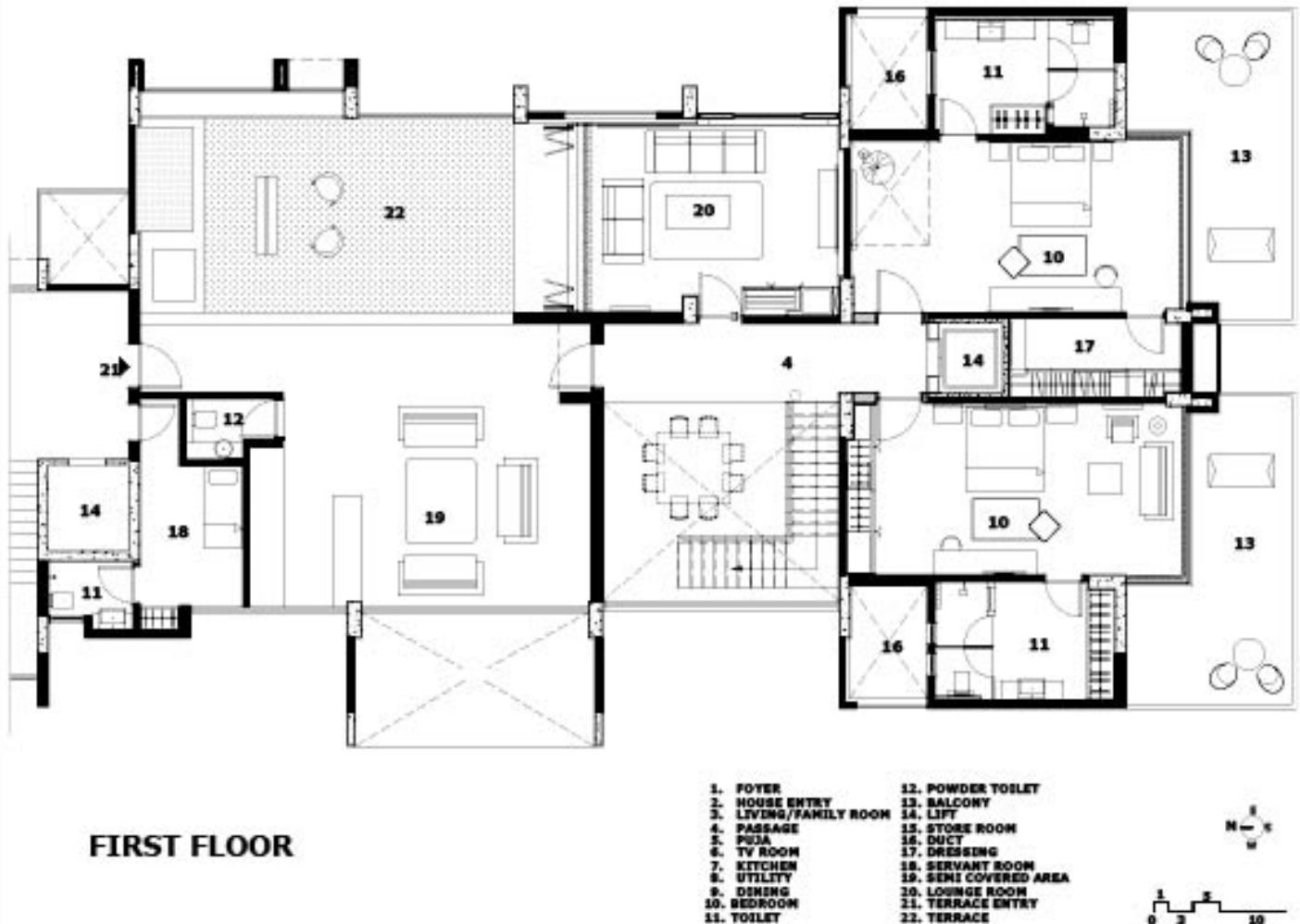


## GROUND FLOOR

- |                       |                       |
|-----------------------|-----------------------|
| 1. FOYER              | 12. POWDER TOILET     |
| 2. HOUSE ENTRY        | 13. BALCONY           |
| 3. LIVING/FAMILY ROOM | 14. LIFT              |
| 4. PASSAGE            | 15. STORE ROOM        |
| 5. PUJA               | 16. DUCT              |
| 6. TV ROOM            | 17. DRESSING          |
| 7. KITCHEN            | 18. SERVANT ROOM      |
| 8. UTILITY            | 19. SEMI COVERED AREA |
| 9. DINING             | 20. LOUNGE ROOM       |
| 10. BEDROOM           | 21. TERRACE ENTRY     |
| 11. TOILET            | 22. TERRACE           |



**O**ne design element in the entire space that is close to the Designer's heart - Art is always a focal point in most of our projects and we consider that as the soul of the environment. The placement of sculpture from Artist Asish Das is one of the highlight of the house which is having a nice view and connection from all the common areas. So, the double heighted staircase block with dining and sculpture is one of the favorite area which governs the environment.



**The challenges faced by the designers during the process of design ideation till execution of the project** - Beause it is a part of common apartment so we need to respect the avilable structure in that terms, there were few design restriction in overall exploration of the language but fortunately the client is a developer himself and his flat is on the top floor we have tried to achieve the desired results with minimum changes in the civil structure.



## FOYER

Structured at stature, this outline of Mansukh Rojiwadia penthouse is a treat for one to live in such mitigating shading plan of greys, tint of brown (wood/veneer) used throughout the house with an additional accent in form of colour or element keeping the idea of minimalism yet audacious all though.

The foyer to the house is accentuated with veneer wall including the main door with the green vase adding a highlight to the space.





The house begins with this lengthened passage standing out by the haring born pattern in white on the Italian marble flooring with veneer ceiling (provided with HVAC within) and highlight of that area is the bronze sculpture by a well-known sculptor Asis Das, giving one an inclination to stroll ahead. The passage also connecting one from semi private to private spaces.





# LIVING ROOM

In the living room, the swing—ubiquitous to homes in Gujarat—has a movable back and was customised for the clients, its ochre upholstery providing a pop of colour against the muted blue-grey of the overall furnishings. A wooden partition screens off the dining area and holds television screens on both sides.

*“The clients wanted this partition to be movable, but the mechanism would have required more maintenance than is justified. It made more sense to just install a TV on either side,” says Gada.*





## DINING

This is a double height space crowned with a multi-tiered chandelier. Adjoining the eight seater dining table, the grey of the micro concrete wall is relieved by rose gold metallic strips which run upwards and continue over the ceiling.



## KITCHEN

The kitchen—a simple, functional space—can either be left open to merge with the living room, or closed off with glass shutters during more busy times, to keep any clutter out of sight. Furnished with entire white touch, the green above one side of platform breaks the shading theme correctly defining the idea of an accent.



## STAIRCASE

Adjacent to the full-length double-glazed windows, the L-shaped staircase embraces the wall and then finds its way up to the floor above. Constructed from a thin metallic plate which supports wooden treads, it contrives to create a visually light effect.



## M. BEDROOM

The muted colours continue on this floor, while the red chairs on the balcony of the daughter's bedroom add a bright, cheerful accent. The flooring and walls of the master bathroom recall the herringbone pattern of the corridor on the floor below.





# BEDROOMS

Keeping the entire house in single veneer polish, son's bedroom breaks this perpetual pattern and sees a darker shade with a different flooring



# BATHROOM







## TERRACE

Home theatre with an arrangement of opening up to the patio garden which has multi shaded kota ground surface and tile cladding on walls. Other side of this terrace garden has seating with pergola top, an endeavour of green wall and a bar counter made up of granite which makes the space even more invigorating for one to experience at any time of the day. The overall colour scheme is kept minimalistic with accents in few.

Our biggest task was to control the palette." Embedded in this comment comes a recognition that with every commission, regardless of budget, scale or type, come opportunities to further architecture's formal, civic and social agendas. Gada's practical deliberations have been combined with the power of form and space, to deliver a home which will withstand the fickleness of trends and fashion.



## DIPEN GADA & ASSOCIATES

LEAD ARCHITECT :  
DIPEN GADA



*As per our style we've tried to fulfil his dreams with very simplistic approach to overall layout and planning keeping all the areas open and well associated with each other. With minimum material palette of white, grey and ash wood, the most important role in the overall planning is been played with natural sunlight and decent cross ventilation.*

*"We tried to make minimal interventions in this home," says Gada.*

**Designed By :** Dipen Gada And Associates. | **Project Location :** Ahmedabad-Gujarat | **Built Year:** 2018 | **Duration Of Project:** 1.5 Yr | **Project Size (In Sq.ft.) :** 7500 | **Lead Architect:** Dipen Gada | **Design Team :** Dipen Gada, Nidhi Patel, Shraddha Patel, And Prakash Prajapati | **Photography :** Tejas Shah | **Text:** Nidhi Patel.

