

5060124

HOUSES IMAGES PLANS

VOL 02

VOL 02 50 BEAUTIFUL HOUSES IN INDIA

50 BEAUTIFUL HOUSES IN INDIA



WHITE
FLAG
SEZAL

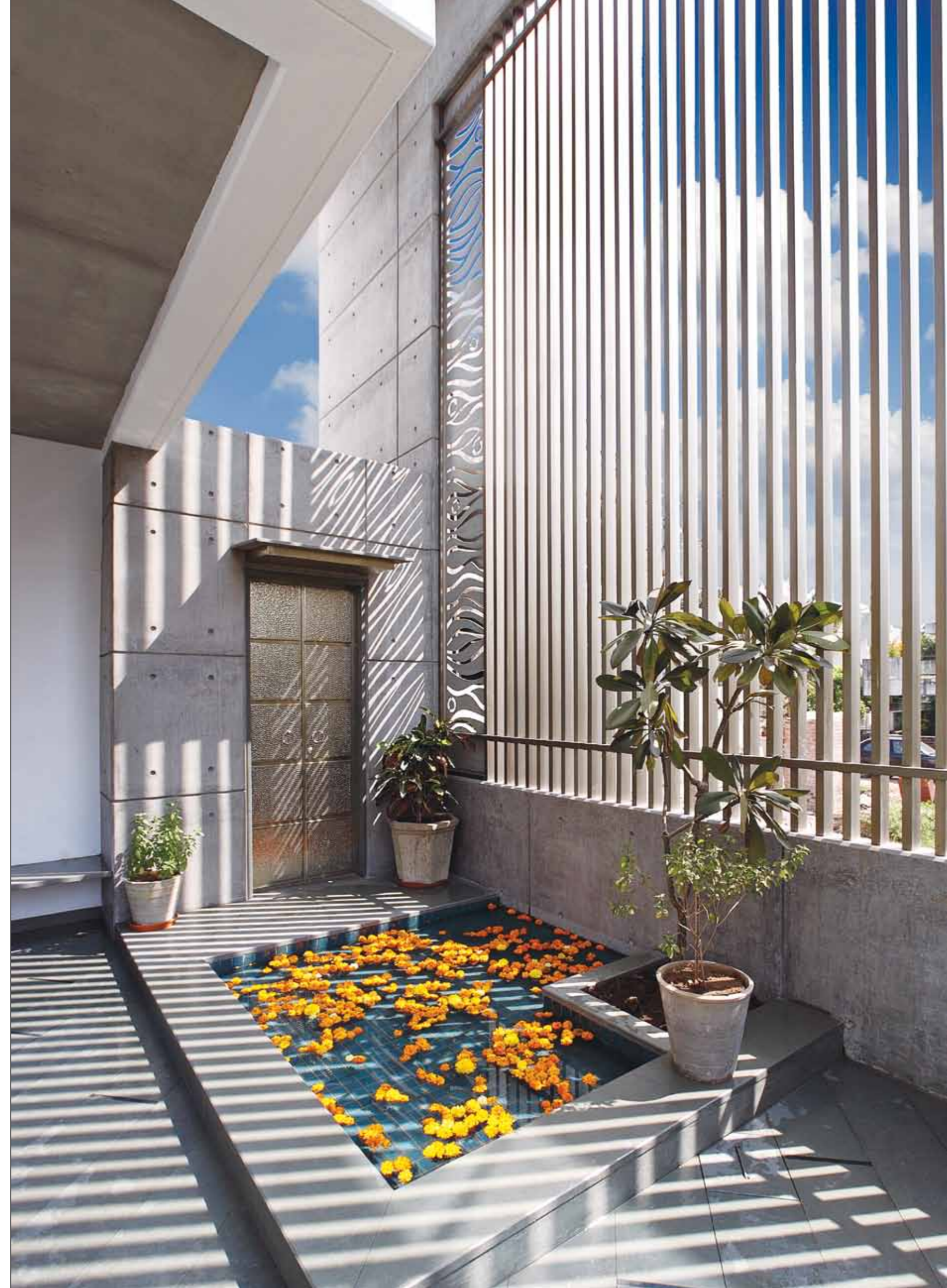
White Flag
SEZAL

Dipen Gada

THE CUBE (BARODA)

01

Designed for a family who wanted a house that was unique and veered away from stereotypes, this house has spaces that are functional, simple, and livable while offering innovative atmosphere. The inspiration for this house is derived from the simplicity and functionality of a cube. The modern aesthetic of the house employs a combination of exposed RCC and white plastered exterior walls in such a way that they look like cubes fitting into one another creating masses and voids resulting in a structure that is simultaneously massive and intimate.



austere

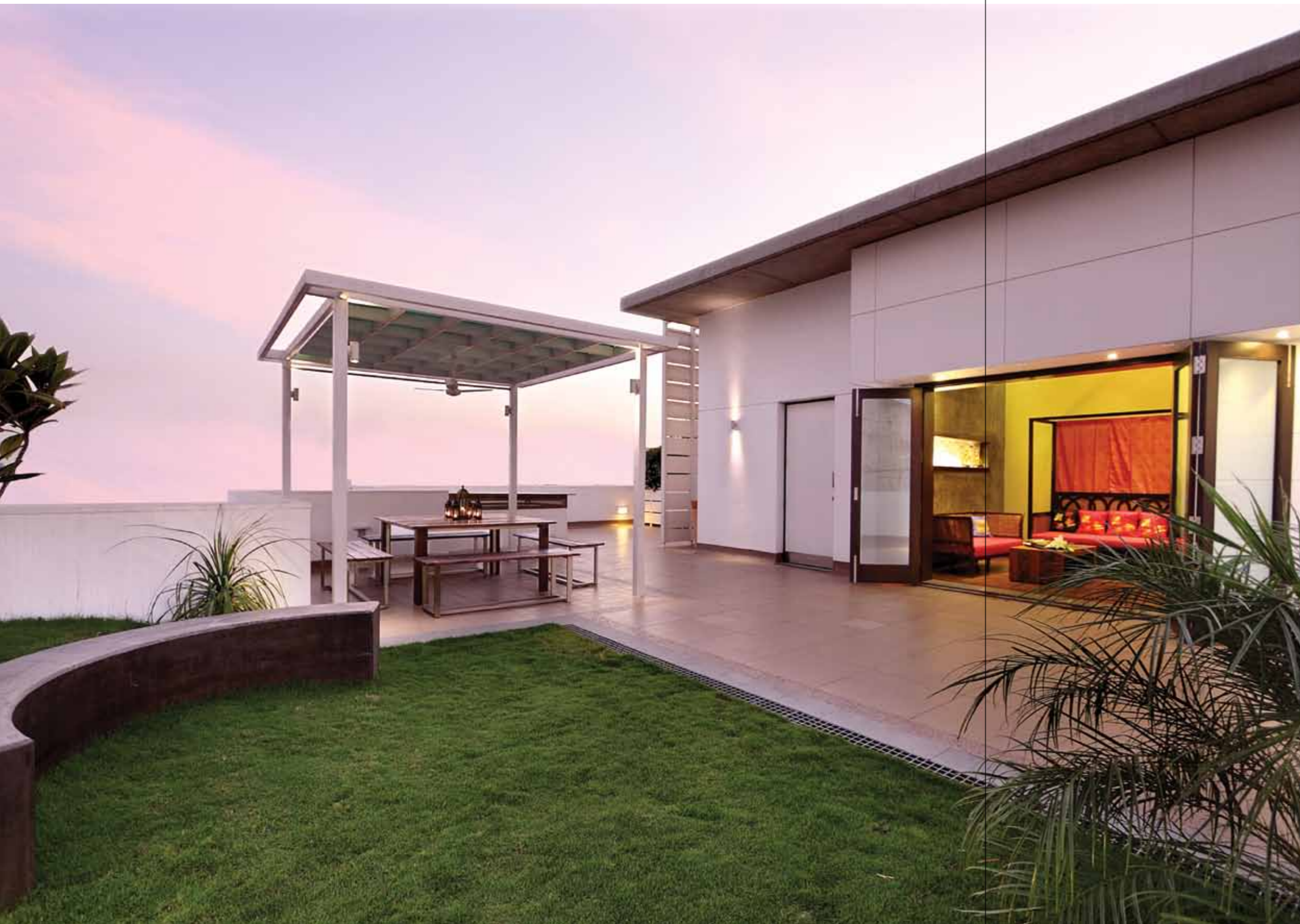
The immediate entry to the house has been demarcated from the living room visually by a change in the flooring material, and physically by a low height storage unit. The focal point in the living room is the black tinted IPS wall. The dining room, which is part of the open planned ground floor, overlooks a small courtyard which adjoins the entry vestibule. It also overlooks a huge double heighted semi-covered courtyard having a water body. Pergolas in the double height slab, coupled with a screen of aluminium fins, create changing patterns of light and shadow that has a dramatic impact. This courtyard has an introspective, intimate feel, perfect for quiet contemplation and provides the perfect setting for the *Pooja* area.

Since the entire planning and material palette is very simple it was very important to come up with the best quality. The concrete casting and motif casting in concrete were the real challenges of the entire project.

Facing page: A black stained IPS wall with a Shreenathji painting forms the feature wall in the living area. The white sofas starkly contrast with this black wall. A cut out in a white partition frames the staircase that is behind it.

Bottom: Exposed RCC slab has been used as a design element in the living and dining room. The dining area opens out into both a large semi-covered courtyard and a smaller courtyard that holds a bust of the Buddha framed by greenery.





Top: The 2nd floor terrace room is a more whimsical space where an IPS wall is complimented with a wall that has been painted a pastel lemon green colour. Colourful furnishings add a sense of playfulness to the room.



Top: Highly polished kota is used in the flooring. A kota ledge along the window provides window seating. An additional otli has been created to provide extra seating. The bed back is clad with aqua marine bisazza and finished in white PU colour. Indirect light from a pelmet over head floods an art wall with light.

Bottom: This area doubles as a dance floor. The slab is of exposed RCC while the flooring is wooden. A motif cut out of new wood is clad on the TV wall and finished in white colour.

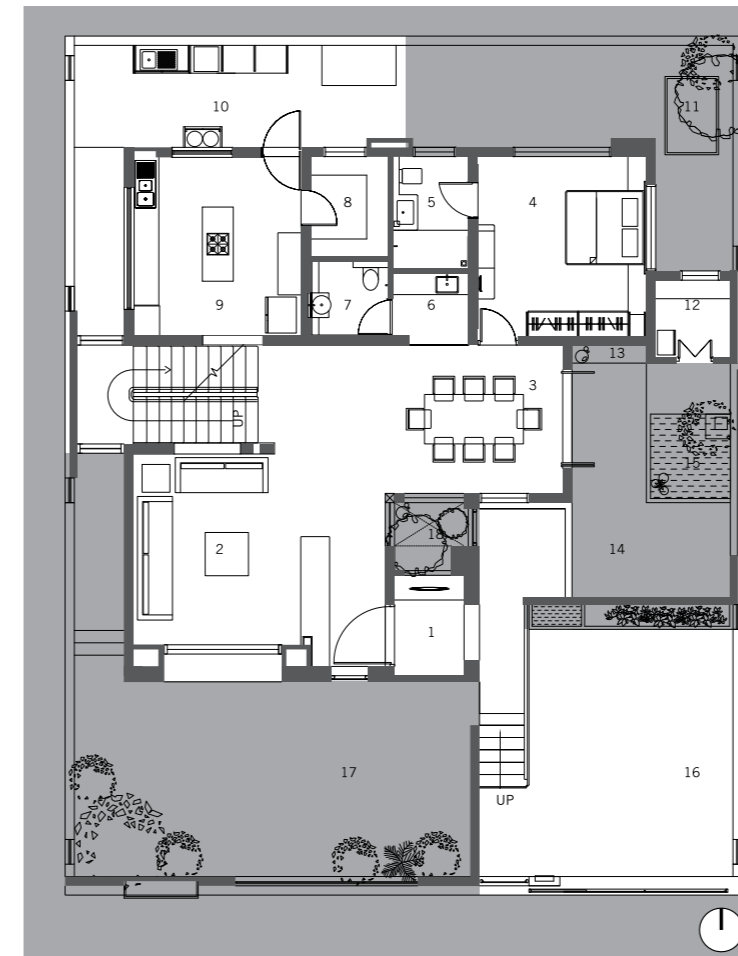


Top left: Multi-coloured kota stone is used in the flooring. The walls are clad with textured tiles up to four feet. A marble basin is placed on a mirror polished kota stone platform.

Top middle: A small wash basin lies just of the dining area. Kota stone mosaic has been clad on the wall and a beaten metal basin rests on a kota platform. A custom made beaten brass framed mirror has been designed especially for this wall.

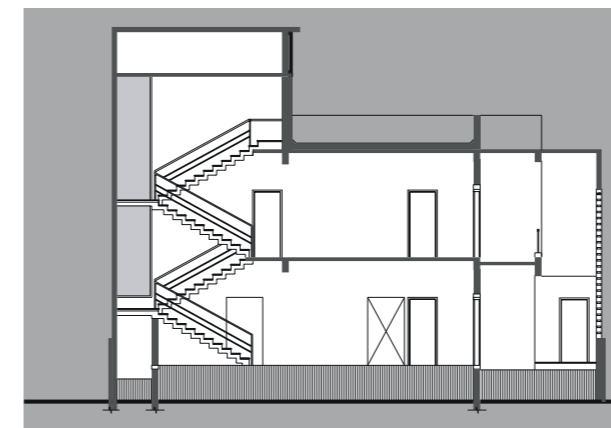
Top right: The staircase, a combination of exposed RCC, wood and metal, is one of the most dramatic elements of the house. The back drop of the staircase is an exposed RCC wall that has a motif of a tree cast into it. Light flows in from slits on either side of the stairwell to flood this area with diffused light.

Bottom: Dark coffee coloured tiles are used in the powder toilet of this room. Here IPS has been used as a finishing material on the platform.

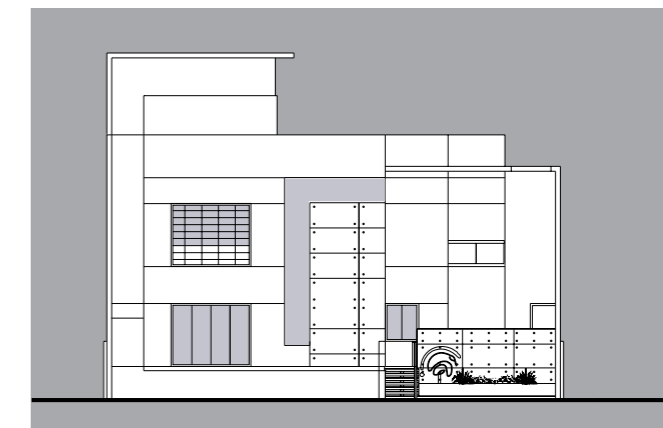


1. FOYER
2. LIVING ROOM
3. DINING
4. MOTHER'S ROOM
5. TOILET
6. POWDER
7. POWDER TOILET
8. STORE ROOM
9. KITCHEN
10. UTILITY AREA
11. UG WATER TANK
12. PUJA ROOM
13. SITTING
14. SIT-OUT
15. WATER BODY
16. CAR PARKING
17. RAISED GARDEN
18. DOUBLE HIGHTED COURTYARD

GROUND FLOOR PLAN



SECTION



FRONT ELEVATION

**FIRM NAME**

Dipen Gada & Associates

PRINCIPAL ARCHITECT

Dipen Gada

EDUCATION

B E Civil Engineering, M S University, Vadodara

DESIGN TEAM

Shalini Pereira, Dolly Pari, Tanvi Raj Purohit, Hardik Tamboli

PROJECT CO-ORDINATOR

Rajesh Patel (Rahi construction)

AWARDS

Best Architectural Residential Design November 2010 at Architects & Interiors India Award 2010

BUILT-UP AREA

4000 sft

TEAM SIZE

15

ADDRESS

3 White House 44 Vishwas Colony Alkapuri, Vadodara 390007, Gujarat

CONTACT / WEBSITETel: +91 265 2311136
Email: dipen317@gmail.com
www.dipengada.com**PRODUCTS / VENDORS**Concrete: **Lotus Cement**Roofing: **R C C slab**Sanitary ware / Fittings: **Kohler, Grohe**Flooring: **Kota, Kajaria Nitco, Green Lam**Furnishing: **All-Aavran Showroom, Address Home & Good Earth**Furniture: **Custom Made & Good Earth**Kitchen: **Siemens, Carysil**Lighting / Switches: **Kesha Lightings, M K Blaze**Air Conditioning: **Mitsubishi**Paint: **ICI Dulex, Cool wrap**Arts / Artefacts: **All-Harmony arts, Dinning Area Mural & Sculpture – Sculptor Ashish Das**Security: **Life SOS**Doors / Windows: **Green Ply & Bloom Laminate, U P V C Sky light Doors & Windows**