

IAG
INTERIOR ARCHITECTURE GROUP

CREATIVE INDIAN
OFFICES-2
NEW TRENDS IN INDIAN OFFICE SPACES

BOLD CONTEMPORARY STYLE

Breaking conventional boundaries, the architects created a space where work and comfort co-exist.



Dipen Gada and Associates

Location: Vadodara, Gujarat, India

Website: www.dipengada.com

Principal Architect: Dipen Gada

Design Team: Dipen Gada (Principal Designer), Arpit Jain & Manav Patel

Other Consultants: Chetan Builders -(Site Coordinator), R.V. Patel & Associates (Structural Consultant), MSP Consultant (Electrical Consultant) & Amair Cooperation- Mitsubishi (HVAC Consultants)

COMPANY PROFILE

Dipen Gada & Associates, popularly known as DGA, began as a very modest interior design firm. Gradually with time and every project accomplished, DGA evolved from an exclusive interior design firm to a civil and architectural planning firm and attained the position of one of the most respectable and admired firms of India.

Since its inception in 1993, DGA has made its presence felt through innovative, minimalistic and timeless designs. The principal designer and founder of the firm, Mr. Dipen Gada holds a Bachelors degree in Civil Engineering from M.S University, Vadodara, Gujarat.

The firm strives to maintain a balance between aesthetics and functionality in all its designs. They believe that any design effort should reflect the essence of being human.

82

MANGLA OFFICE

Client- Manish Patel, Project Location- Vadodara, Gujarat, India, Built up Area- 757 sq. mtr., Photography Courtesy- Tejas Shah

OVERVIEW

The basic requirements of the client for the project were 3 CEO cabins, welcoming reception, engineering, administrative and accounts department with their head cabins, conference, room, dining and all other needful functional spaces for a developer's office.

While working on the layout, the architects conceived a central space practically open for interactions while functionally acting as a multipurpose space. The cabins were designed peripheral to the central space and attached with balconies that acted as spill overs for the occupants.

The ideology of combining work and fun forming the soul of the design, the designers decided to generate an outdoor area along with each work space. Fortunately, this was possible as the premises of this 8000 sq.ft. space on the top floor of 12 storied building belonged to the developers who themselves were the pioneers of it.

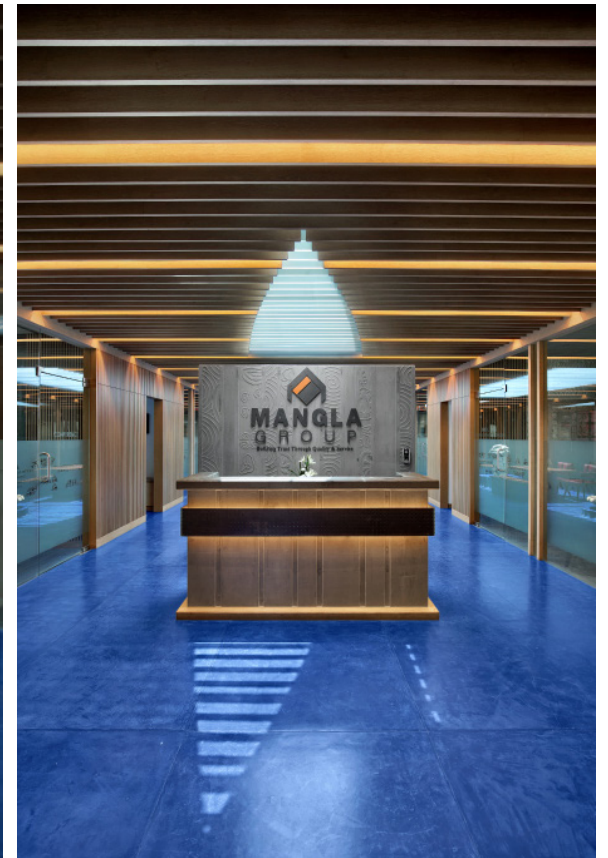
The USP of the design rests on two major decisions made by the architects.

The first was to have a slab cut out of eucalyptus leaf shape with pergolas made of aluminum and wooden finish laminate with thick buff acrylic to reflect the shape of the cut-out. The second decision was the use indigo blue coloured oxide flooring, which allowed flawless fluidity in the floor.



As one enters to the lobby, one comes across a very simple standalone reception area with an articulated concrete wall acting as a backdrop to the reception table and holding the company's name as the highlighting element of the area.

The waiting area holds minimal furniture like a black chic sofa and the wall behind is ornamented with a ceramic mural by the artist Vinod Daros.





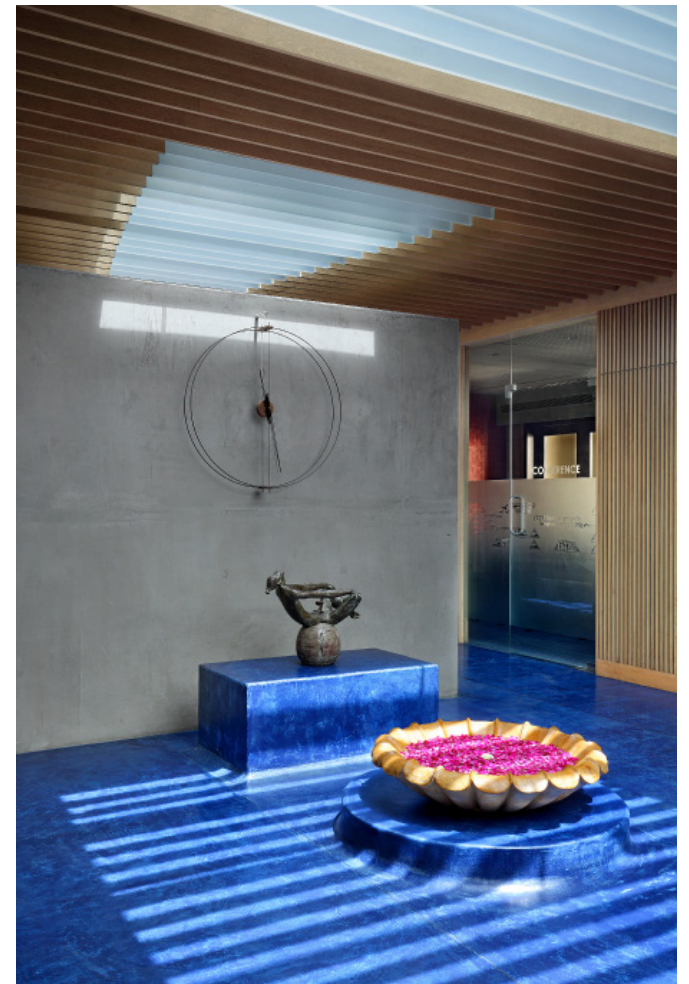
The play of pergola in the central area creates varied patterns in the ceiling and at the same time the reflection on the floor adds dynamism throughout the day and round the year.



The central area is designed with a theory of designing backdrops for art works as art plays a vital role in the overall ambience of a space.



The seamless watery looking floor offers a calm and soothing feel and adds a magical effect to the overall environment of the space.





The spill over space for the cabins is actually nothing but balconies and they are well treated like outdoor areas. The balconies are designed with mosaic flooring and wooden ceiling.





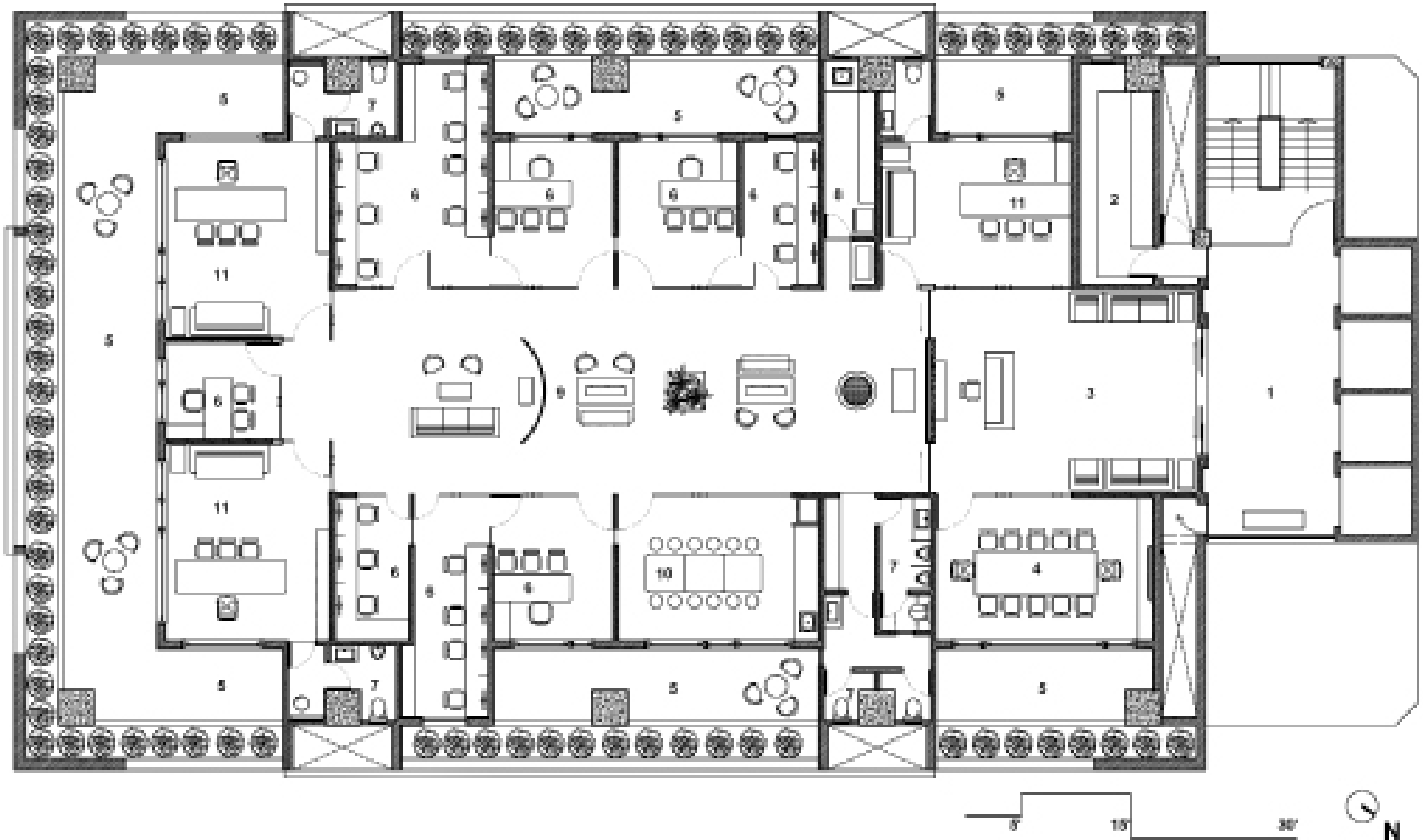
Extensive use of wooden Pattis with clean lines makes the interiors of the cabins minimal and simple.



The cabins have carpet flooring and paneled ceiling which solves the acoustic problems of the area to maintain the decorum of an office space.



The custom-made table in one of the CEO cabins is a combination of 3 materials-- wood, copper and MS. The task light over the table is also custom made so that they complement each other.



FLOOR PLAN

LEGEND

FLOOR PLAN

- 1. LOUNGE
- 2. SERVER ROOM
- 3. RECEPTION AREA
- 4. CONFERENCE ROOM
- 5. COVERED TERRACE
- 6. OFFICE CABIN
- 7. TOILET
- 8. PANTRY
- 9. CENTRAL PASSAGE

10. DINING AREA

- 11. DIRECTOR'S CABIN

MATERIALS

Flooring:	IPS, Italian marble, Kota mosaic, Carpet Tile & Vitrified Tile
Wall Cladding:	Cement sheet panelling, Steam beech Wood Panelling, Exposed RCC Designer Wall, Wallpaper
Light Fixtures:	Nextray Technology
Bath Fixtures:	Grohe & Duravit
Furniture/Decor:	Stanley, HOF & customised
Others:	Hafele, Dorma (Accessories & Interior Fixtures)