

50
HOMES

482
IMAGES

100
PLANS

Colour of the Year:
Cosat Radiance by
Asian Paints

INDIA'S FIRST INTERACTIVE ARCHITECTURAL BOOK

Liberating itself amidst the economic background of modern India, as private clients begin to approach architects to design homes that are symbolic of social standing, wealth and lifestyles, the contemporary Indian home has evolved itself multiple times over, to reveal a plethora of opportunities in residential design that define modern architecture within the realm of place-making in the Indian subcontinent.

This book documents the work of 50 Indian design firms with projects that demonstrate diversity in contemporary Indian architectural design by responding to context, location, climate, terrain, function and client specificities. Each home breaks away from the typical norms of home design; while some are derived from the clients' briefs and their lifestyles as inspirations, there are others that evolve as a derivative of their location context and more that are conceptually grounded in theoretical notions.

Being even more unique in its conception, along with images, drawings and facts about each home, Skyboard integrates the technology of 'augmented reality' to make this book interactive for all its readers through 50 high quality videos of the architects talking about their featured house and its story by a simple 'plug-n-play' with any device. The idea is to bridge the gap between the architect and a potential client, looking to build an amazing home

"I congratulate Skyboard for their creativity and introduction of augmented reality videos in 50 Amazing Homes in India. It's a great way to get the reader closer to the architect and his project. I wish them all the best."

– Ar. Hafeez Contractor, Mumbai

"A book like this was long overdue, as it showcases the tremendous talent we have in our country. It also exposes the works to a vast audience, both professional and lay, and to all those who love to see good design."

The format and layout, along with the first ever innovative idea of interactive videos of each of the featured works is presented very well. Congratulations to my friend Dhvaj and to Skyboard for this amazing book; knowing him I know that it's a labour of love"

– Ar. Naushir DeVitre, Talati & Panthaky Associated Designers LLP, Mumbai



9 788193 174104

INR ₹4000
US \$70
EUR €60
UK £45

VOL 1

50

AMAZING HOMES IN INDIA

CURATED BY
AR. CHRISTOPHER
CHARLES
BENNINGER

skyboard™

50

AMAZING
HOMES
IN INDIA

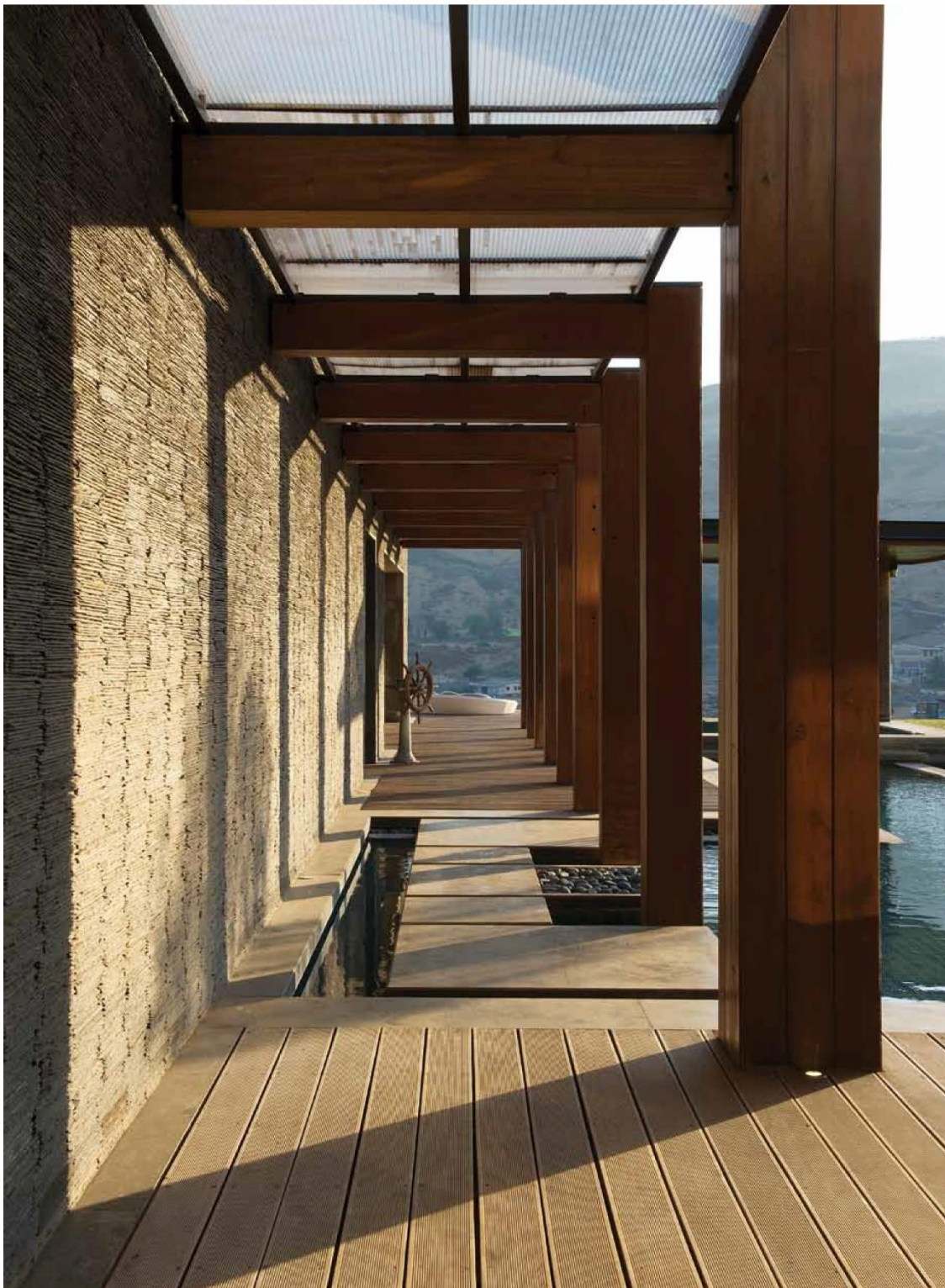
VOL 1

INDIA'S FIRST INTERACTIVE
ARCHITECTURAL BOOK



CURATED BY
AR. CHRISTOPHER CHARLES BENNINGER

skyboard™



50

**AMAZING
HOMES
IN INDIA**

VOL 1

COVER IMAGE

SE-ARCH Architects, Photographer: Bharath Ramamrutham

TITLE PAGE IMAGE

Atelier Design & Domain, Photographer: Sebastian Zachariah

CURATION

Ar. Christopher Charles Benninger, Pune

EDITORIAL

Epistle Communications, New Delhi

GRAPHIC DESIGN

Kena Design, Bengaluru

PRINTER

Silverpoint Press Pvt Ltd, Mumbai

PUBLISHER

Skyboard Media Pvt Ltd

CIN: U74120MH2013PTC249271

COMMUNICATIONS ADDRESS

B-303, Jyoti Plaza, S V Road,

Near Fire Brigade, Kandivali (W)

Mumbai 400067

+ 91 22 66912928 / 30

info@skyboard.co.in

REGISTERED ADDRESS

C-209, Raj Crescent, Eksar Road

Royal Complex, Borivali (W)

Mumbai 400092

FIRST PUBLISHED IN NOVEMBER, 2015

COPYRIGHT

The Copyright of this book as well as the matter contained herein including illustrations, photographs, drawings, sketches, plans, sections, elevations, etc., forming part of this book rests with Skyboard Media Pvt Ltd the publishers of the book. Nobody should copy, its title design, content, illustrations, photographs, drawings, sketches, plans, sections, elevations, etc. in any manner, form and in any language, totally or partially or in any distorted form. Anybody doing so shall face legal action under the Copyright Act, 1957 and shall be further responsible for damages.

Contents of this book are reproduced after taking due and diligent care. However in case of any typographical errors, if any that may have occurred while reproduction of the same may be treated as exempted.

ISBN: 978-81-931741-0-4

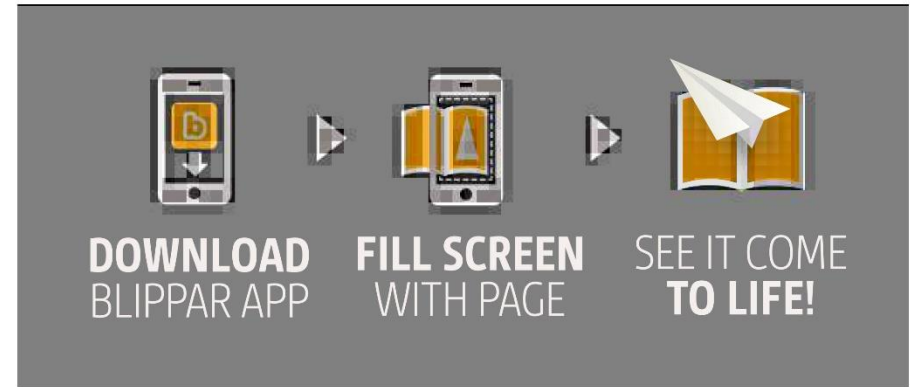


Presented by

buildōfy.com

**HOW TO PLAY
VIDEOS THROUGH
AUGMENTED REALITY**

Wouldn't it be great, if along with stunning images, factual data and architectural drawings, as a reader, you also get to hear the conceptual story of each project from the architects themselves? Skyboard integrates the technology of 'augmented reality' with this book for all its readers. Through this, you get to see 50 high quality videos of architects talking about the featured house.



Scan the page with  through Blippar app and enjoy the video of the architect explaining the house.

 **DOWNLOAD**
Blippar app for:   

**Blippar works the best when your phone or tablet is connected to wi-fi or 3G*

27 DIPEN GADA & ASSOCIATES



PRINCIPAL DESIGNER
Dipen Gada

ARCHITECTS
Priyanka Shah
Aanal Adalja

CO-INTERIOR DESIGNER
Aditi Patel

CONTACT
3, White House
44, Vishwas Colony, Alkapuri
Vadodara 390007, Gujarat
T: +91 265 2311136, 2351626
E: dipen317@gmail.com
www.dipengada.com

Spread across a plot area of 94,600 sq. ft. in Gujarat, the brief for this contemporary Indian home called for a virtuous, simplistic and elegant retreat, whose built form is devoid of any clutter. An airy and spacious environment was also a pre-requisite, away from the daily hustle-bustle.

Attempting to redefine the Indian modern, a bold, yet minimalist response is achieved by means of a white, rectangular shell with clean lines amidst the dense plantation of mango, palm and coconut trees. Conceived as a platform that overlooks the green premises, each area is designed to open up to the naturesque views by means of geometric openings. Despite the challenge of the client wanting to sacrifice some bit of the plantation in order to maximise site frontage, the architects managed to succeed in preserving all of it, while pushing the house to the rear. Through detailed orientation and light-shadow studies, space planning is achieved by positioning day-active areas in the east, while staggering the openings on the western façade for optimising wind flow.

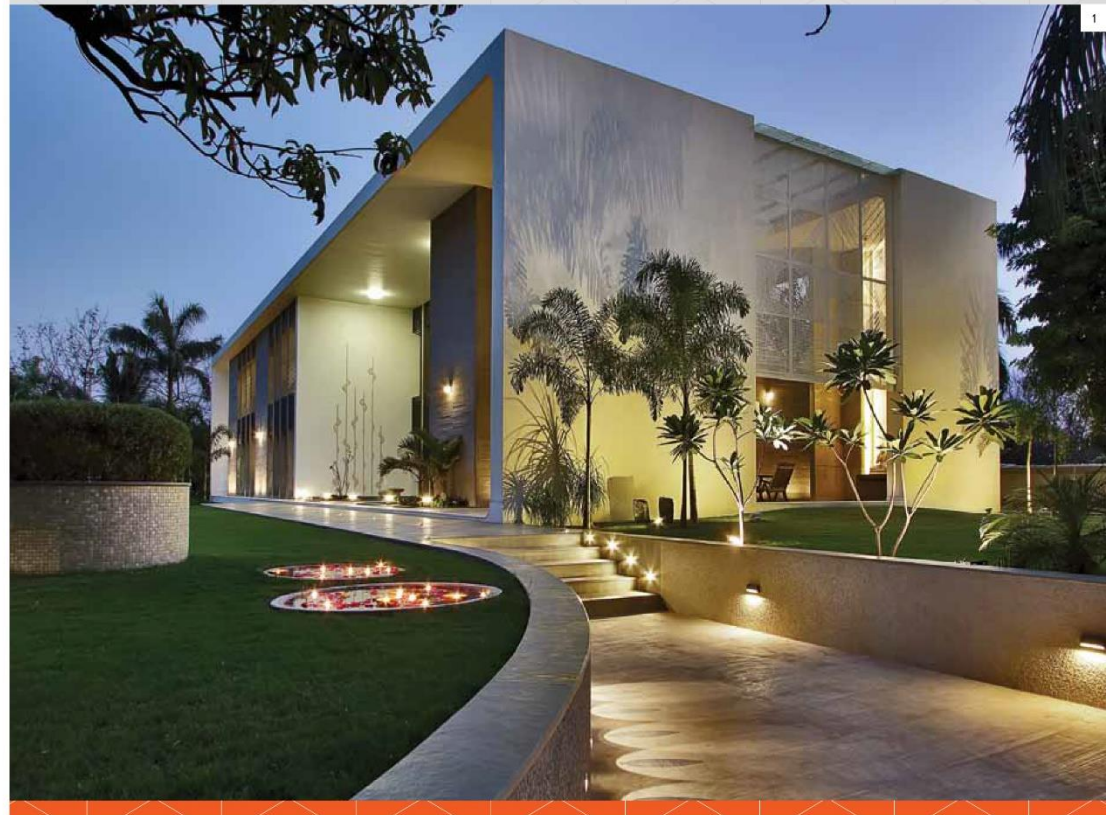
A long corridor forms the spine of the home with living areas and a puja room on one side and family rooms, kitchen and utilities on the other. The semi public and private realm is separated by the flight of stairs that leads to the first floor. A voluminous foyer welcomes the grand entrance at the centre of the shell, accompanied by a lily pond, and the traditional *Champa* tree. The living area opens up into a double-height, semi-open courtyard, that is covered by a dot matrix geometric screen, overlooking the natural surroundings. A terrace at the level above engages in dialogue with this courtyard below.

Keeping in line with the earthy approach, exposed concrete walls with a horizontal wooden texture augment the drama. Mirror polished Kota stone is used throughout, except for the circulation, living and family rooms that are done using river-finish Kota. The minimalist style percolates through the design of the interiors, furniture as well as landscape. A 16 ft. high, leaf-shaped mural is cast in concrete along the passage wall, going up to the first floor. Covered with German silver handmade panels with a pattern of embossed leaf-like veins, this installation is complimented with the dynamic play of light and shadow.

The simplicity and elegance of Lambhvela home is indeed, a peace retreat, away from the stresses of life.



Attempting to redefine the Indian modern, a bold, yet minimalist response is achieved by means of a white, rectangular shell with clean lines amidst the dense plantation of mango, palm and coconut trees. Conceived as a platform that overlooks the green premises, each area is designed to open up to the naturesque views by means of geometric openings.



LAMBHVELLA HOME | 2015
9,685 SQ. FT.
SEVASI MAIN ROAD, VADODARA, GUJARAT

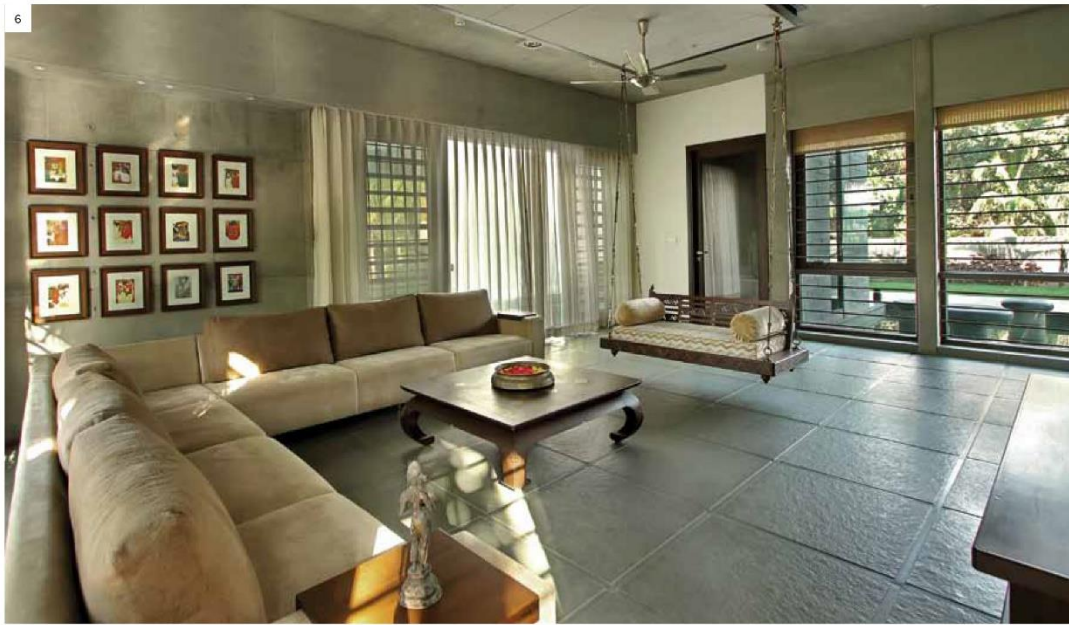
1. *The Geometric House.*



2. Landscaped front porch with water body.

3. Spacious balcony against a dynamic backdrop of light and shadow.

4. The covered veranda during the daytime allows ample light through the skylight above and evenings are substituted with white lights. **Design Idea by Nitco:** Lighting up earthy flooring in rough-finished stone creates a classic, elegant aura in a rustic space.



5. Family lounge and dining area in rustic yet simple interiors, allowing the space to bathe in ample sunlight & fresh air.

6. Modest Living room with clutter-free furniture.

7. A neutral wooden palette connects the flooring and the furniture.
Design idea by Asian Paints: White walls are used to offset the artwork while making the room look spacious.

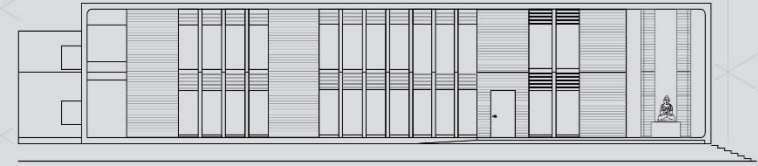
8. A simple wooden lattice, reminiscent of the traditional jaali, is used to bring in daylight.



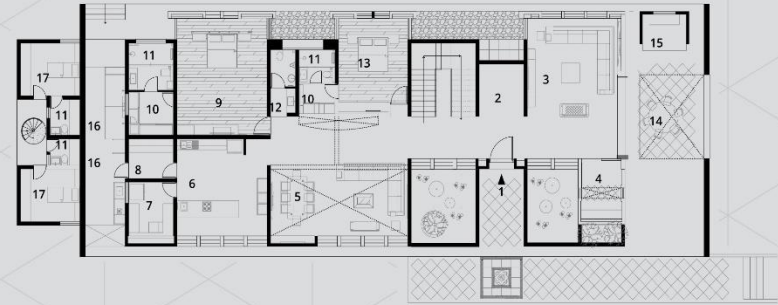
9. Bathrooms retain bare elegance through an earthy colour palette.

10. Leaf-shaped flooring that complements the dynamic play of light and shadow.

11. A leaf shaped mural, cast in concrete along the passage wall going up to first floor.



ELEVATION



GROUND FLOOR PLAN

1 ENTRY. 2 FOYER. 3 LIVING AREA. 4 PUJA ROOM. 5 FAMILY-DINING AREA. 6 KITCHEN. 7 STORE. 8 WASH & UTILITY. 9 GUEST BEDROOM. 10 DRESSING AREA. 11 BATHROOM. 12 POWDER ROOM. 13 BEDROOM. 14 OUTSIDE FOYER. 15 DEEP RECYCLE WATER BODY. 16 OUTDOOR WASH & UTILITY. 17 STAFF ROOM.

UNIQUE MATERIAL APPLICATIONS

ROOFING: VM Zinc
 WINDOWS: Encraft from Skylight Doors & Window
 FLOORING: Nitco, Harmony from Labh Sales Corporation
 LIGHTING: Hybec, Tricks from Perfect Light & The Home Appliances
 COLOUR: Asian Paints, Pidilite from Ramchandra Sahani
 SANITARYWARE: Duravit from Decoart
 BATH FITTINGS: Hansgrohe from Decoart
 FURNITURE: Custom Made by Damaram & Samir
 FURNISHING: D' Décor, Siddhi, Sleepwell from V9 Home Decor
 HARDWARE: Häfele, Dorset from K D Sons
 KITCHEN: Aran from Jay Sales Corporation
 WOOD: Burma Teak from Bholenath Saw Mill
 STONE: Kota Stone, Mint Stone from Baba Marbles

SECURITY: LifeSOS, Comex from Ark Logix
 MARBLE: Australian Marble from Udaipur, Rajasthan
 GLASS: Reflective Asia Float
 CONCRETE / CEMENT: Concrete M20, Binani Cement
 AIR CONDITIONER: Mitsubishi

KEY CONTRIBUTORS

STRUCTURAL: B R Patel Associates
 CIVIL: Rahi Construction Co
 LANDSCAPE: Tulsibhai Narola

PHOTOGRAPHY BY: TEJAS SHAH

