

Kitchens • Bathrooms • Bedrooms • Living rooms

# THE DESIGN SOURCE

75 December - January 2013



Facebook



Digital Edition

## The Cube

*A modern aesthetic house design inspired from the simple CUBE by Dipen Gada & his team.*

## What's in for Bathrooms in 2013

*Turning the master bedroom into your personal retreat*

## Personal Flamboyance:

*GA Design have created a stylish haven in the midst of crowded bustling surroundings.*

## Optimal Design

*Good design is all about managing space and resources, this is exactly what Andrea Bell & Rajiv Garg achieved in their design.*

## Dining goes bold

*How to landscape a small area.*





# THE CUBE

Dipen Gada & Associates is an architectural and interior design firm based in Baroda headed by, Dipen Gada, a Civil engineer from the M.S University of Baroda. Having completed over 600 projects DGA has established itself as one of the most reputed design firms in Baroda.

Over the last few years DGA has completed a few small and selective architectural projects which have had a great influence in reshaping the firm's design ethos. There has been a deliberate shift made towards a more simple, minimal and 'back to basics' kind of design sensibility where, unnecessary embellishments are avoided. All of DGA's projects, are marked by a refined contemporary look typified by clean lines and basic forms.



Situated in Baroda, the inspiration for this house is the simple cube. The modern aesthetic of the house employs a combination of exposed RCC and white plastered exterior walls in such a way that they look like cubes fitting into one another creating masses and voids resulting in a structure that is simultaneously massive and intimate. Dipen Gada takes us through the design and making of this magnificent house.

The brief of the client was simple - to create a house which veered away from housing stereotypes. This was one of the rare residential projects where the client was one with a rare vision and trust. This meant that we had the responsibility of delivering a vision of the client's in a way that while representative of their brief, transcended their expectations.



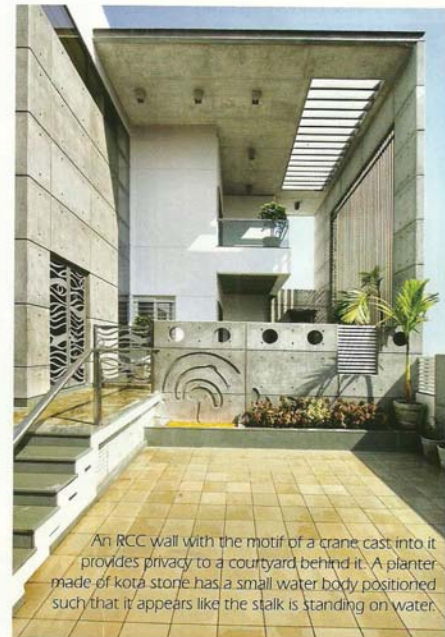
GROUND FLOOR



FIRST FLOOR



SECOND FLOOR



An RCC wall with the motif of a crane cast into it provides privacy to a courtyard behind it. A planter made of kota stone has a small water body positioned such that it appears like the stalk is standing on water.

This 4000sqft home embraces modernism with clean lines and an open floor plan, while keeping in mind the regions climatic conditions and Indian ideals. Environmental transparencies at the ground level, created through courtyards and large openings help in passively cooling the internal spaces.

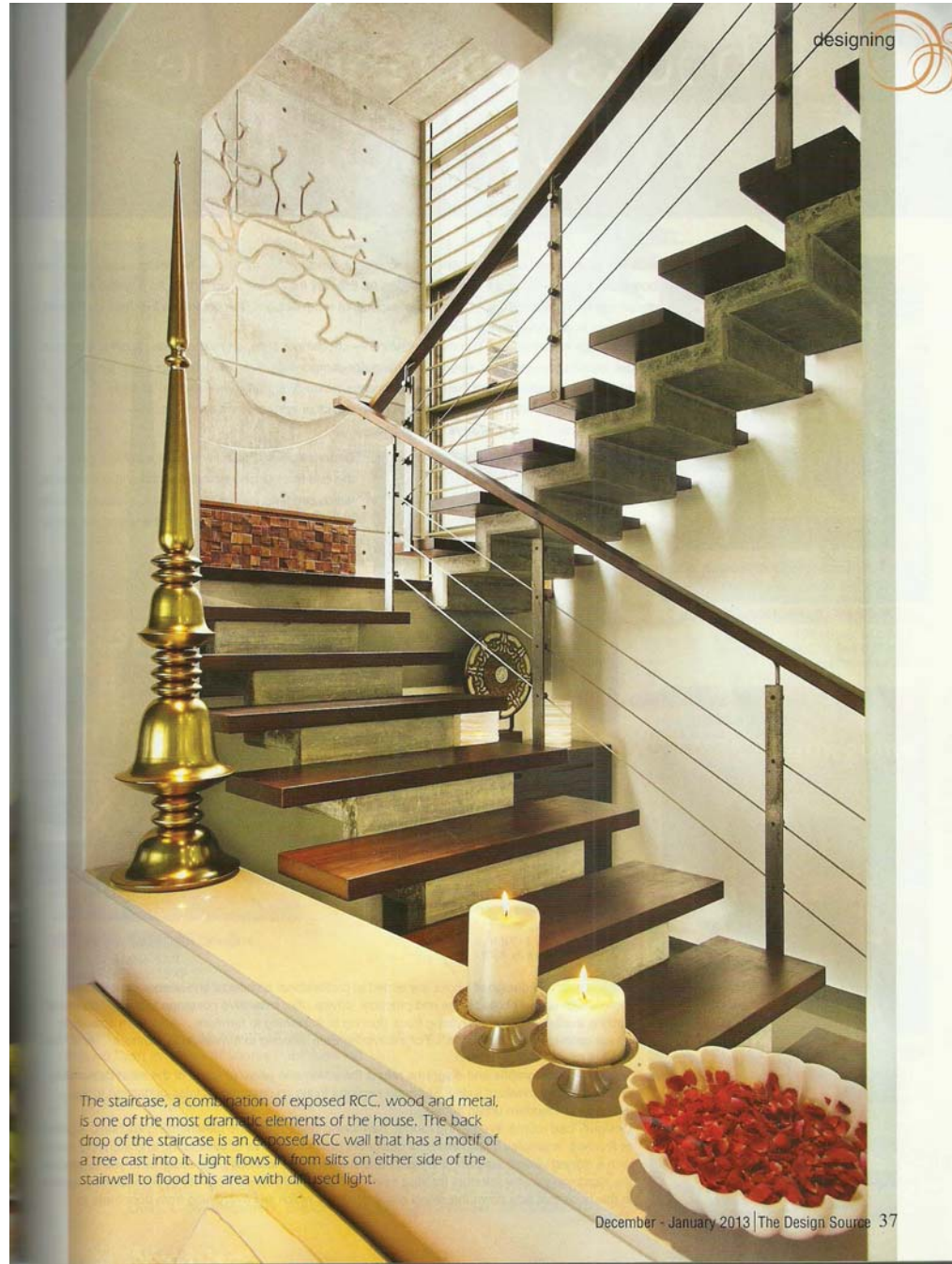
A raised entry threshold signifies the entry into the house. The flooring here is of tiles of multi-coloured river polished kota stone leading to the entry. At the entry we first see a custom made grill that has been cast out of aluminum. The entry vestibule opens out into the living room area. There is a small courtyard adjacent to this vestibule. This is visible from the living and dining area, but has been screened by a custom made screen of lacquered M.S sheet. The courtyard acts as a light well drawing diffused light into the house.

Over all we have used a neutral colour palette throughout the house. Materials have been applied with great restraint, and care to detail, such that the house appears somewhat austere. However strategically placed art pieces tastefully elevate the level of sophistication. The highly mirror polished kota stone flooring at the entry level lends a contemporary and elegant look while complimenting the exposed RCC which has been used in the slab in the living and dining areas.

Entry to the pooja room is through the courtyard. The ornamental doors are made of beaten white metal.



The entry to both the courtyard and the entry foyer are screened by a custom made grill cast in aluminum.



The staircase, a combination of exposed RCC, wood and metal, is one of the most dramatic elements of the house. The back drop of the staircase is an exposed RCC wall that has a motif of a tree cast into it. Light flows in from slits on either side of the stairwell to flood this area with diffused light.

Change in the flooring material and a low height storage unit demarcate the entrance from the living room. The focal point in the living room is the black tinted IPS wall which holds a painting of Shreenathji.

The dining room, which is part of the open planned ground floor, overlooks a small courtyard which adjoins the entry vestibule. It also overlooks a huge double height semi-covered courtyard having a water body. Pergolas in the double height slab, coupled with a screen of aluminum fins, create changing patterns of light and shadow that has a dramatic impact. This courtyard has an introspective, intimate feel, perfect for quiet contemplation and provides the perfect setting for the Pooja area.

The staircase, a combination of exposed RCC, wood and metal, is one of the most dramatic elements of the house. The back drop of the staircase is an exposed RCC wall that has a motif of a tree cast into it. Light flows in from slits on either side of the stairwell to flood this area with diffused light.



A band of multi-coloured kota tiles divides the living room from the dining area. This forms a kind of passage that leads to a cabinet at the end. This veneered cabinet has a carefully selected bronze sculpture.

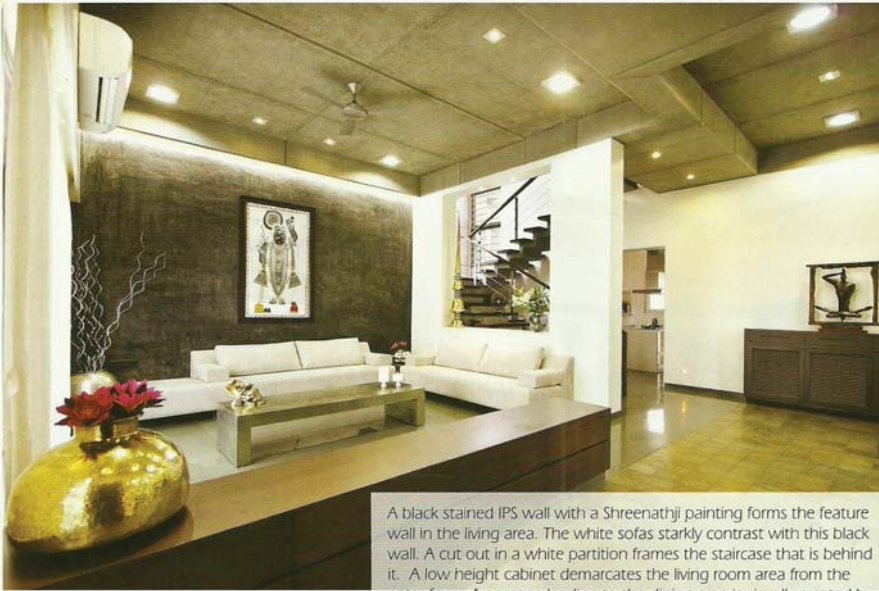
Exposed RCC slab has been used as a design element in the living and dining room. The dining area opens out into both a large semi-covered courtyard and a smaller courtyard that holds a bust of the Buddha framed by greenery.



A small wash basin lies just of the dining area. Kota stone mosaic has been clad on the wall and a beaten metal basin rests on a kota platform. A custom made beaten brass framed mirror has been designed especially for this wall.

At the first floor level the staircase opens out into a central space which is used as a TV room. This space also doubles as a dance hall for the client's daughter, who is a classical dancer. The first and second floor is a more private part of the house and this is demarcated visually with the use of wooden flooring. The warmth of the dark richly toned wood adds a sense of intimacy to the space.

The first floor level also houses the master bedroom suite. The master bedroom is dominated by a black stained IPS wall having S.S patas inlaid in horizontal and vertical lines. This IPS wall forms the back drop for a custom designed poster bed that frames an abstract artwork. The bedroom is radically simple yet elegant with its veneered furniture, wooden flooring and white walls.



A black stained IPS wall with a Shreenathji painting forms the feature wall in the living area. The white sofas starkly contrast with this black wall. A cut-out in a white partition frames the staircase that is behind it. A low height cabinet demarcates the living room area from the entry foyer. A passage leading to the dining area is visually created by the use of multi-coloured kota stone tiles having river polished finish.



This area doubles as a dance floor. The slab is of exposed RCC while the flooring is wooden. A motif cut out of new wood is clad on the TV wall and finished in white colour.

A veneered study table is part of cabinet that is designed to hold both extra clothes as well as books.



Feature wall is of black tinted IPS with inlay of S.S patts in a grid. A wooden poster bed frames an abstract painting. The entire IPS wall is flooded in indirect light from a slit in the ceiling above. Sheer curtains let in filtered light.





The bathroom is clad fully with travertine marble. The master bathroom is done in monochromatic tones.



Highly polished kota is used in the flooring. A kota ledge along the window provides window seating. An additional otti has been created to provide extra seating.

The bed back is clad with aqua marine bisazza and finished in white PU colour. Indirect light from a pelmet over head floods an art wall with light.



Both daughters' bedrooms are also on this floor. They are marked by clean lines and starkly minimal forms. The totally white rooms contrast beautifully with the highly polished kota stone flooring.

In the elder daughter's room this starkness is interrupted by the aqua marine bisazza mosaic tiles behind the bed.

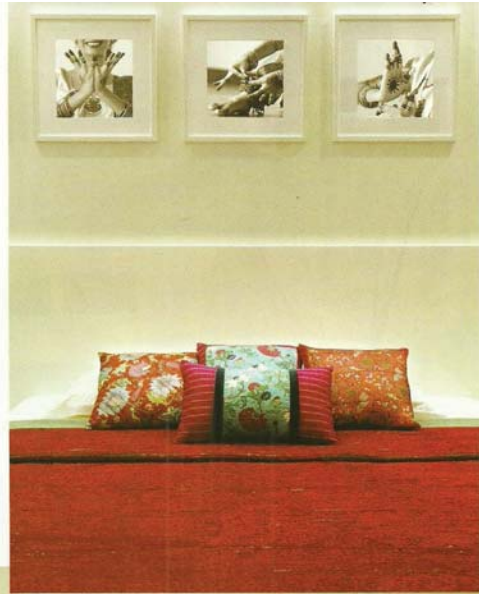


designing

Bright colourful furnishings give vibrancy and fun to this younger daughter's room. Black and white photographs of the daughter performing add drama.

The bed back is finished in white PU colour. Indirect light from a pelmet over head floods an art wall with light. This art wall holds black and white images of the daughter taken while she performs a classical Indian dance.

Highly polished kota is used in the flooring. A kota ledge along the window provides window seating. A low height cabinet doubles as a seating with multicoloured seat and cushions.



designing

The bathroom is done in Italian marble and tile. A wooden false ceiling is over the wash basin platform.

A small room has been carved out from the terrace area. This doubles as a second TV room as well as a gym. This room opens out onto a terrace which has a small landscaped garden and a gazebo. The playfulness seen in this room, with its painted exposed brick, IPS walls was well as the use of colourful furnishings is a departure from the rest of the house which is rather austere. This has been deliberately done as this is an informal area that is quite removed from the rest of the house.

In this all white room the furniture is finished in beige PU colour. The bed back is having a floral motif carved into it.





The 2nd floor terrace room is a more whimsical space where an IPS wall is complimented with a wall that has been painted a pastel lemon green colour. Colourful furnishings add a sense of playfulness to the room.

A raised platform has been provided which can be used as an exercise area. Here a black-tinted IPS walls frames a section of wall where the plaster has been chipped off to expose the brickwork below. This masonry has then been painted white.



Dark coffee coloured tiles are used in the powder toilet of this room. Here IPS has been used as a finishing material on the platform.

Care has been taken to make this house environmentally friendly. Openings have been placed to maximize the inflow of breeze, while reducing direct sunlight. Compact fluorescent lamps have been used in most of the spaces to reduce energy consumption and green rated air-conditioning systems have been used. An effort has also been made to use natural materials that are easily available.

Something Dipen feels strongly about is that the success of the project is a team effort, and the role of a site coordinator is very important in the overall scheme of things. In this project we worked closely with the coordinator to ensure that the best was drawn of the labour agencies without whose skill and hard work the level of finishing seen in this project would not have been achieved.

**Fact file**  
 Built up Area- 4000sqft  
 Duration- 18 months  
 Principal designer- Dipen Gada  
 Design Team- Hardikk Tamboli, Aditi Dave,  
 Shalini Pereira, Dolly Shah.  
 Site Coordinator- Rajesh Patel  
 Photography- Tejas Shah  
 Text- Shalini Pereira

■ Dipen Gada  
 Dipen Gada & Associates  
 3, White House, 34 Vishwakarma Colony, Ahmedabad  
 Gujarat - 380 015, India. Phone: 91 79 4211120,  
 Email: dip\_gada@rediffmail.com/  
 dipg@rediffmail.com