



The interiors are defined by a dialogue between clean lines and the bold usage of exposed concrete.

# PINBALL HOUSE

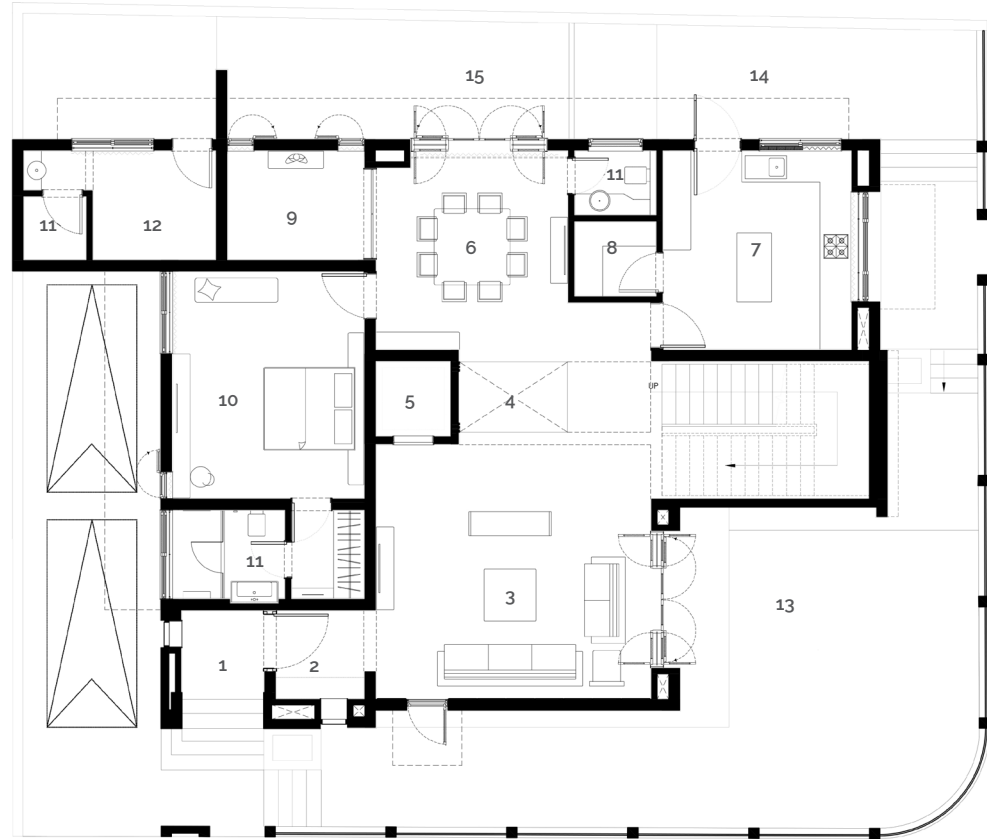
The architecture and décor of this residence are a physical manifestation of its architect's conscious intention to explore the material limits of exposed concrete—not just in terms of its structural capacities, but also as a medium of art.

Location **Vadodara**  
Design Firm **Dipen Gada & Associates**  
Built-Up Area **5350 sq ft**  
Completion **January 2016**

With an extensive programmatic brief proposed on a tight plot of 4010 sq. ft., the design of this home is more vertical, while accommodating the existing green surroundings on its west face. The restricted footprint accommodates all essentials such as the living, the dining, the kitchen with a storage area, a utility area, five huge bedrooms, a garden, a lift, a home-theatre, a terrace garden and servant quarters. The architecture and interiors of this residence are defined by a dialogue between simple, clean lines and a bold usage of exposed concrete. The greys of the concrete and its patterns are the first things that strike the visitors' eyes, endowing a contemporary flavour to the structure. The concrete wall with a pin ball pattern facing the west creates an interesting pattern on the facade as well as sharp sciography on the stairs inside. The adjacent wall curves and bends vertically, offering a twist of the identity. It provides a view of the sky and the foliage of mature trees from the surrounding streetscape along the compound wall.

The spatial flow of the house is dictated by its focal point—the courtyard. All activities on the floor plates open into this space, which proposes a vertical interaction amongst the family. The courtyard also becomes a medium to provide copious amounts of natural light to the core of the house via a skylight, as well as an escape channel for hot air from the interiors. Manifesting itself as the anchor of the house, it is highlighted by a sculpture sitting below dramatic height against the backdrop of patterned exposed concrete. The sculpture tells different stories amidst daylight and artificial light at night. The patterns of concrete are reflected in the entire house in the myriad architectural and interior details that are inspired by the works of S. H. Raza and then its derivation that is used as a language of design. The architect's passion for exposed concrete can be seen in the entire house; there is a conscious intent to explore this medium. Along with its structural ability, the concrete is used as a substance of art to create different moods within the space. The boldness of design can be seen in the concrete of the foyer wall, the staircase wall on the exterior, and the detailing on the walls in the living room, the courtyard, and the daughter's bedroom.





#### TYPICAL FLOOR PLAN

1. Porch
2. Foyer
3. Living Area
4. Courtyard
5. Lift
6. Dining Room
7. Kitchen
8. Store
9. *Puja* Room
10. Parent's Bedroom
11. Toilet
12. Servant's Room
13. Garden
14. Utility
15. Deck



**Facing Page:** The concrete wall with elements from the pin ball game, facing the west creates an interesting pattern on the facade.  
**Top:** The skylight manifests itself as the anchor of the house.; it is highlighted by a sculpture that sits against an exposed concrete backdrop.



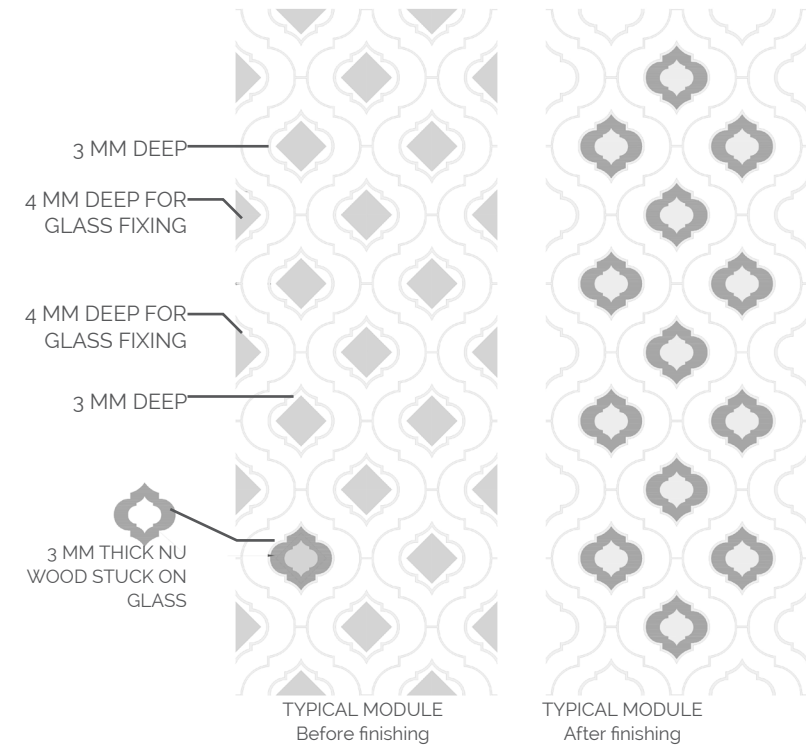


The décor of the residence is defined by clean lines and a minimal palette of colours and materials.



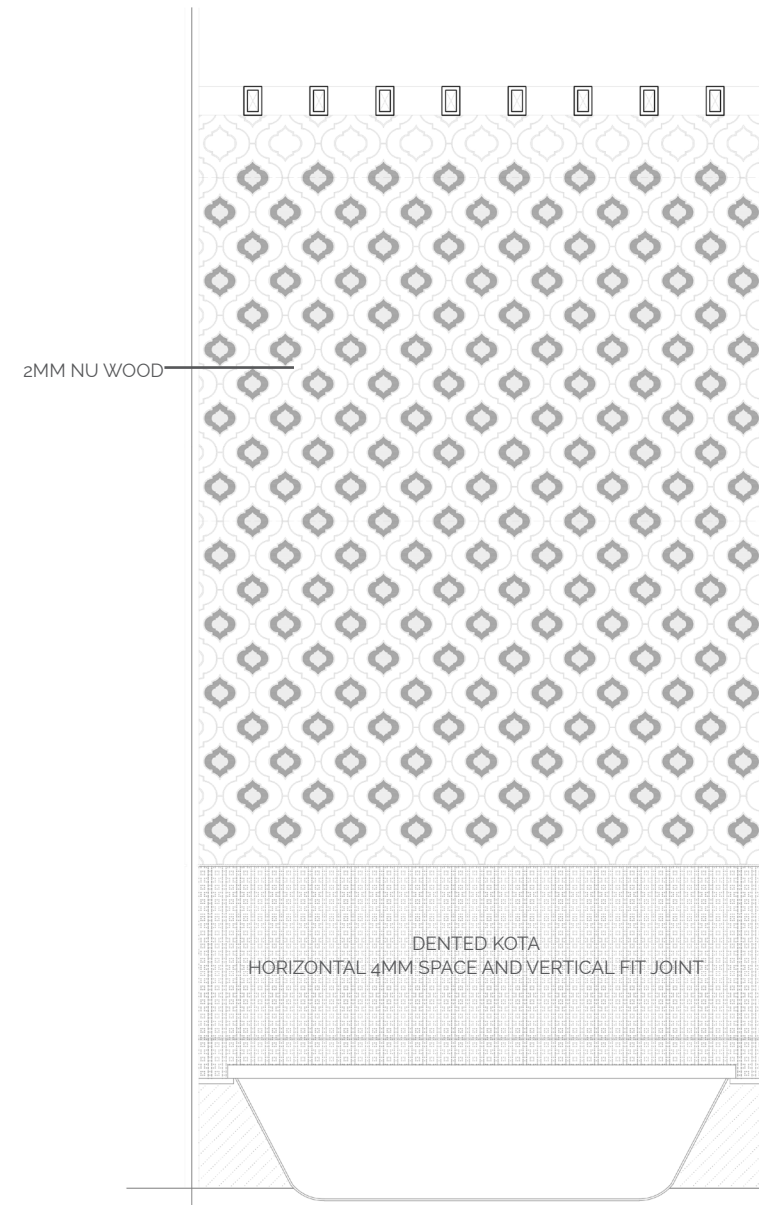
A vibrant feature wall adds drama and interest to the bedroom's understated aesthetic.





PAPER ROUND

PLAN OF NU WOOD SHEET











**Facing Page:** The dining room is beautifully ornamented; artwork, display items, and soft furnishings help add warmth to the space.

**Top:** The décor of the residence is marked by varied elements—artwork, ornamented furnishings, and light fixtures—that work in harmony to create a sense of muted luxury.

#### MATERIAL SPECIFICATIONS

**Flooring:** White Ambaji marble, Kota, and Wooden Flooring.

**Wall:** Exposed Concrete, White Plaster

**Lighting:** N/A

**Ceiling:** POP, Wooden, Expose

**Soft Furnishings:** Seasons, Serome, Aavaran

**Interior Finishes:** Expose concrete, POP, Paint, Italian Marble, White Marble, Kota stone

**Furniture & Decor:** NOLTE modular kitchen, Centre table with Mother of pearl inlay, the meditative sculpture by Mumbai based artist Prafull Singh.

