

LUXURY APARTMENTS

a powerful urban phenomenon, the luxury apartment is untouched by global market downturns or political change, proving what we knew all along, that the rich are indeed different ! ifj explores this exotic animal in the urban jungles of india and abroad

From New York to London,

Paris and Dubai, the luxury apartment is well established globally. In India too, residents of metros, tier 1 and 2 cities are beginning to see the advantages of living in high-rise towers that offer superb views, a varied buffet of amenities, including ramped-up security, and enough personalization to compensate for not being in a standalone space.



mkp penthouse, baroda | dipen gada and associates, baroda



pedder road apartment, mumbai | ashiesh shah architecture and design, mumbai

Ar. Rajan Goregaoker and Ar. Sachin Goregaoker, Partners, GA design, Mumbai explain, "A well-balanced timeless design, the use of state-of-the-art materials and exclusive furniture, and an overall soft and plush feel makes a luxury apartment." Far from being loud and garish, such apartments are now imagined as subtle and classic spaces, where the quality of the materials used testifies to the lifestyle of its inhabitants.

Luxury exemplified in an apartment space has many facets. Keeping in mind the importance of architectural planning, such spaces are now designed incorporating key features like privacy, security, maintenance, soundproofing, parking and entertainment, so as to provide a hassle-free life to residents. Lifestyle features

such as gyms, swimming pools, spas, multiple parking slots, children's areas, gardens, private cinemas, 24-hour concierges, helipads, residents' lounges, clubhouses with business lounge areas, restaurants and party areas are now commonplace in high-end developments. Within the apartment, home automation systems allow the owners to run their entire household from their phone or tablet, incorporating security cameras, access controls, temperature controls for rooms and wine cellars, motion detectors and car lifts.

The exposure to international trends, products and designs have collectively boosted the urban architecture of the country, defining housing trends not only for the super-rich as branded

luxury, but also catering to the middle and upper middle classes as affordable luxury. Designers strive to deliver a unique experience for clients by personalizing spaces, adding comfort, installing high-end amenities, allocating open spaces, and planning intricate details to create apartments that are truly luxurious. Zubin Zainuddin and Krupa Zubin, Principal Architects, ZZ Architects, Mumbai share their ideas on the space, saying, "A luxury space is truly one that is tailor-made to your requirements, with the utmost attention to quality and longevity. It is personalized to maximize and add great value to one's current and aspirational lifestyle."

Designing such apartments come with challenges, with designers under pressure to stay

luxury residence, mumbai | ga design, mumbai





private apartment, pune | metaphors, pune

within budget, while critically analyzing the goals of clients in the context of their own design thinking. Ar. Ashiesh Shah explains, "It's hard to know where to draw the line between satisfying the client and maintaining your aesthetic sensibility."

As Indian cities develop and there is an upward shift in land value, there is a natural progression towards vertical living, with the proximity to commercial hubs making luxury apartments a pan-Indian phenomenon. Ar. Amala Sheth and Anand Bhagat, Metaphors, Pune explain, "Currently popular only in tier 1 & 2 cities, this phenomenon will slowly move

into smaller cities and towns in the near future. In fact, with the growing aspirations of youth in smaller towns, it will be the need of the hour. Luxury homes are an ever-expanding market. Internationally, too, the segment is growing. According to Peter Joehnk, Co-managing Director, JOI-DESIGN, Hamburg, Germany, "In Germany and across much of Europe in general, this is certainly the direction in which things are going. Standalone houses are often too far away from city centres, and apartments have much better security. I believe the demand for luxury apartments will continue to grow along with the desire for increasingly personalised, bespoke design."

grand paradi, mumbai | seza - seema puri & zarir mullan architects and interior designers, mumbai





nyc - 5th avenue, new york | jean-louis deniot, france

upper east side luxury apartment, new york | currimbhoy & co. ny and mumbai



vintage villa, nahar's amrit shakti, mumbai | manju yagnik, nahar group, mumbai



The real estate slowdown caused by demonetization affected the luxury housing segment to a significant degree. Property analysts say that the maximum delays have been faced by premium projects, where sales have slowed and cash flows have been tepid, leading to developers delaying completion. "It's clear that for ultra luxury projects, you have to stick to what you promise, you have to deliver on time and ensure you satisfy the consumer. I don't see too many people completing their projects on schedule. But there is significant premium for close-to-completion projects," says Vinod Rohira, Managing Director And Chief Executive Officer (commercial real estate and REIT), K Raheja Corp (Source: Mint).

Despite the setbacks in the general economic environment, it is clear that ultimately the aspirations and demands of customers will prevail, and that the desire for luxury is not going away any time soon. Zubin Zainuddin and Krupa Zubin say, "Owning a bespoke home is clearly one of the biggest luxuries that one has in our cities. The future will involve incorporating technological advancements into such spaces and allowing buyers to plan and specify their individual needs while the projects is being built." ifj

LUXURY APARTMENT, MUMBAI

Milind Pai Architects and Interior Designers, Mumbai

Design brief and aim

Design is thinking made visual, and the architect approached this project keeping to the spirit of this statement, while incorporating the client's brief to create a modern and luxurious look.

How this was accomplished

The apartment is approached via a lobby, featuring two consoles and artefacts to create a classic look. That design language continues into the living room, with seating areas in accents of cream, beige and gold, and chairs in a bold red. This space opens up to an outdoor area complete with swing. The onyx dining table has a rose gold base, while white and dark grey shades dominate the kitchen, which has a brown breakfast table and textured wall tiling.

The master bedroom features wooden flooring, cream walls and warm cove lighting, and

a walk-in wardrobe. The daughter's bedroom has white walls with splashes of pink, mirror work, a soft board frame in silver leaf and a walk-in wardrobe. The son's bedroom has wooden paneling, open light fixtures, and a walk-in wardrobe with chandelier.

The home theatre incorporates theater-style recliners and movie posters, while the ceiling has a black base with fiber optic lights that resemble a starry night sky.

Happily ever after

The space incorporates a unique balance of aesthetics and luxury. The carefully curated furniture and artefacts gives this project a status beyond that of a regular luxury apartment.





PENTHOUSE, MUMBAI

ZZ Architects, Mumbai

Design brief and aim

The architect's vision for the space was appreciated by the client, who asked for a home with a contemporary look and an outstanding outdoor space, uniquely crafted for the family in a timeless environment.

How this was accomplished

The 12,000 sq. ft. duplex apartment, which commands magnificent views, is designed to entertain large numbers of guests and incorporate private areas for the family as well. The lower level houses the entertaining area: a living room, a pool deck and terrace, a kitchen, dining space, pooja room, home gym and library.

The upper level comprises four bedrooms. The solid stone stairwell is placed in reference to the house, forming the main volumetric and visual connection between the public and private spaces. An automated bar is tucked in seamlessly below it; this was customized to reflect the family's lifestyle.

Throughout the apartment, the design language features clean lines, interesting textures and an innovative use of materials like wood, marble and copper, with a focus on details and finishes.

How green was my project

The design uses the natural resources of the site, allowing ample natural light to flood in, giving the apartment a lively feel. The existing terrace pool and levels were retained and made the most of, to create both entertaining and private spaces. The use of automation in terms of presets for the blinds and the lighting in the apartment supports energy conservation.

Happily ever after

The space exemplifies timelessness, and has been designed to instill a feeling of simplicity and spaciousness.





UPPER WEST SIDE PENTHOUSE, NEW YORK

Currimbhoy & Co. NY and Mumbai

Design brief and aim

The design of the space created in accordance with the client's wishes, led to the creation of a simple 'white box' with beautiful natural materials – akin to a luxury 'white hotel room'.

How this was accomplished

The spectacular views via the 15' high windows, facing the Manhattan skyline, played a prominent role in conceiving the design, including oversizing the doors, lifting the ceilings and pruning walls to maximize the floor area.

The lower level houses the living room, dining room, kitchen, den and guest room; the bedrooms, including the master suite, are located on the upper level. American walnut runs through both the

floors, while Calacatta marble drapes the bathrooms. A kitchenette separates the master suite from the remaining bedrooms, and overlooks the living room.

The fireplace flue is located within a large boxed enclosure and a low-profile enclosure that functions as a column. The staircase forms a light and modern structure with a single steel stringer supporting the walnut treads, and glass balusters around a central opening with two intermediate landings providing views to the east, as well as a balcony overlooking the living room.

Happily ever after

The simplicity of the design reflects the luxury quotient of the client.





G43, AUSTRIA

FADD Architects, Italy

has a balcony that contains a *hammam* with a natural stone seat, under a vault illuminated by LEDs.

The terraces feature Atelier Vierkant vases housing big plants, a teak floor, outdoor kitchen and pool. In the kitchen, Varena Poliform units form a backdrop to white walls, while the outdoor kitchen features JokoDomus units, and the outdoor furniture is Roda/Gloster. White walls, chevron Oak parquet, and the minimal lines of the furniture, plus the use of iron and concrete materials for the fireplace, embellish the atmosphere.

Happily ever after
The space has a natural and welcoming elegance, and evokes a feeling of luxury that is not ostentatious.

Design brief and aim

The recently added structure, atop a historic building in the heart of Vienna, is an attempt to create a sophisticated design for a luxury real estate market while giving it a 'Made in Italy' flavor.

How this was accomplished

The process started with the extension of the rooftop, to generate three apartments of different sizes, complete with open spaces. The larger apartments feature terraces and a pool, and have high-end Gaggenau kitchen appliances, a mini spa and bespoke sauna. The smaller apartment



Design brief and aim

Designed for a NYC bachelor, the apartment is a cool, chic space in one of the most prestigious buildings of the city.

How this was accomplished

The space used to be a pediatrician's office, so the designers had to start from scratch, wanting a strong aesthetic to flow through the apartment. An impressive entry hall immediately makes an impact, courtesy the interplay of the two-tone marble and two variations of Japanese wallpaper.

The apartment forms a sleek mix between Art Déco and Neoclassical styles, complemented by the eclectic furnishings. The firm created many interior details from scratch to make use of the space's potential. The apartment has both a French flavor and an elegant American feel, with furnishings sourced from both Europe and the USA.

The biggest challenge with the project was to control the natural light; they succeeded by playing with light contrasts to create a gentle yet exciting effect, keeping the palette as neutral as possible.

Happily ever after

The apartment perfectly encapsulates the aim of giving the occupant a real feeling of being in New York while reflecting the grandeur of this famous Pre-War building.



NYC-5TH AVENUE, NEW YORK

Jean-Louis Deniot, France





DAGA RESIDENCE, PENTHOUSE, MUMBAI

Ashiesh Shah Architecture and Design

Design brief and aim

The client wanted an out-of-the-box design, with plenty of private areas that was also perfect for entertaining guests. This made for a gratifying yet challenging project brief.

How this was accomplished

The design journey started by taking the space's characteristics into account, while subtle elements and hidden design details were strewn across this 15,000 sq. foot apartment. The entry leads to a living area, with a double height ceiling and features

unique elements like the David Weeks lights and a copper staircase with a skylight opening into a Juliet balcony. The bar area is full of sleek contemporary furniture and artworks. An office area connects the living area with a marble library and a meditation room clad in Shungite stone. A window that frames the iconic dome of the Taj Mahal Palace hotel forms a beautiful detail, while the interior takes inspiration from the interplay of materials: white epoxy, copper, cement sheets and light wood veneer. A series of organic shaped lights and a hammock between

two bonsai trees creates a perfect leisure spot.

Happily ever after

The project perfectly meshes the vision of the client and the architect, and the space plays uniquely with one's perception of space and volume.

How green was my project

The balconies, terraces and open areas were meticulously landscaped to boast a spectacular 360° view of the city, while letting in soft light and breeze.





PEDDER ROAD APARTMENT, MUMBAI

Ashiesh Shah Architecture and Design

Design brief and aim

In designing his own home, the architect enjoyed complete artistic freedom and has made it a reflection of his own identity.

How this was accomplished

The two-bedroom apartment was remodeled into a free-flowing space, reflected in the living and dining rooms. These form a sizeable area for entertaining, as well as a more intimate zone.

The rest of the apartment is more coherent than detached from this main area, with the stairs leading directly into the master bedroom, and the kitchen opening into the living room. The materials and color flow from the living room into the kitchen, as does some of the art. The gold-finished counter adds a pop of color to the room.

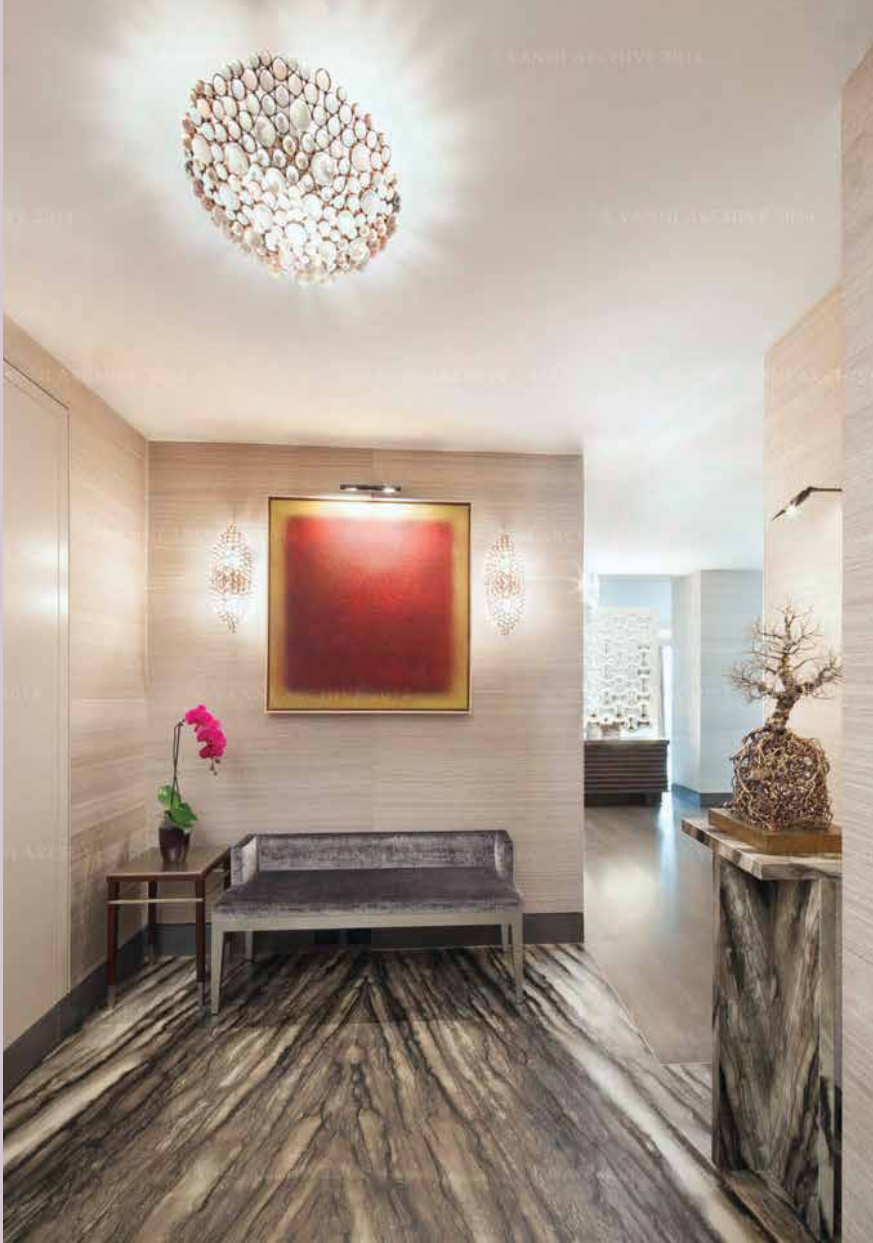
The furniture is a blend of pieces restored or custom made by the architect featuring earthy and natural tones and materials. The lighting is minimal, meant to highlight the architect's art collection.

The staircase is the house's pivot point; made mostly from a monolithic piece of marble and steps opening into individual drawers that hold delicate works of art, dubbed 'curiosteps'.

Happily ever after

Fluid, versatile and constantly changing, this well-designed home allows the space to subtly transform and remain engaging.





Design brief and aim

The project combined two apartments into one single 3,500 square foot space, with a directive to create two distinct spaces: a private area with bedrooms and a public space for living and dining.

How this was accomplished

The apartment is accessed via a vestibule laid with a bookmatch pattern in hand-chiseled white marble with black veins, which resembles a 'Namaste'. This provides access to the bedroom suites, children's playroom and media room.

The formal living space features a light grey stained walnut floor with silk and wool carpets and elegant furniture. A discreet *pooja* cabinet was also created here, obtained by sliding marble panels and chiseled to look like fabric.

A custom bar cabinet with gold leaf panels, and a dining table featuring a 4" thick, 9' long slab of marble, demarcates the living and dining areas. The kitchen features a built-in breakfast area, laundry room, mudroom and maids quarters.

Every bathroom is equipped with radiant heating panels to provide warmth to the stone floors. The master bathroom walls and floors are lined with crystallized blue Macauba slabs, and include a walk-in steam shower and massage tub.

Happily ever after

The design maintains a sense of grandeur and serenity within a high-rise tower in the middle of the city.

UPPER EAST SIDE LUXURY APARTMENT, NEW YORK

Currimbhoy & Co. NY and Mumbai





LUXURY RESIDENCE, MUMBAI

GA Design, Mumbai

Design brief and aim

This 5,000 sq. ft. duplex apartment has a stunning view of the Arabian Sea and was planned to make the most optimum use of space, as per the demands of a well-travelled, young and social family of four.

How this was accomplished

Since the building has one flat per floor, the lift lobby was conceived as an extension of the home. The entry door is finished with Zircote veneer and the staircase lobby features marble inlay flooring. The staircase is finished in marble

and wood with its abutting wall clad in mirrorwork. Onyx marble panels highlight the living area and can be backlit on occasion.

The living room features leather sofas, a customized bar, and superb views of the Arabian Sea. The lower floor houses the guest bedroom, finished with leather and corian-cut design panels and ash colored veneer. The first floor comprises three family bedrooms, and a family-cum-theater room. The master bedroom features a leather ceiling, veneered walls and a walk-in wardrobe, while the son's suite is in shades of

black and white with a 3D wall. The daughter's suite has a wooden floor, pastel green curtains and a bathroom, walk-in wardrobe and dressing area.

Happily ever after

The neutral color palettes, rich materials and the sensible layout create a perfect blend of luxury and practical living.

How green was my project?

The use of LED lights, sensor lights and a VRV air-conditioning system make the space eco-friendly.





Design brief and aim

Situated in a prime location, this penthouse is built on the scale of a villa, with vast spaces synching with each other seamlessly.

How this was accomplished

This 7,000 sq. ft. duplex penthouse, with a 3,500 sq. ft. terrace garden, is accessed via a foyer, fitted out with an asymmetrical bench. A large sculptural piece, featuring a male human figure, is complemented by a glass frieze featuring a female form.

The living area has a burnt granite wall and features an extended view of the city. An interconnected staircase with a bare concrete wall forms the backdrop to human figures carved out of fiber that scale the wall, signifying an upward journey conceptualized by the architect.

The dining area has seven pendant lights and curling creepers in glass holders hanging above a dining table with mother-of-pearl inlay. The all-white kitchen was specially custom-made on site.

The ground floor features two bedrooms and a pooja area. The upper floor houses bedrooms, a home theatre and meditation area. While the master bedroom has separate areas for entertainment, study and sleeping; the daughter's suite has an adjoining room that serves as a hangout place and study area.

The garden features a water body, sit-out, swings and a white gazebo with hexagonal handmade white tile juxtaposed with slate mosaic flooring and a wooden deck.

Happily ever after

The ambience creates a sense of calm, while the client enjoys a comfortable balance between the built-up areas and green spaces.



MKP PENTHOUSE, BARODA

Dipen Gada And Associates, Baroda

CHICAGO APARTMENT, NORTH LAKE SHORE DRIVE

Jean-Louis Deniot, France



Design brief and aim

This 5,000 square foot apartment project is the result of a full renovation, including the interior design and furnishings.

How this was accomplished

The existing apartment was completely gutted, and renovated over a period of two years. The base of the layout and design is in the French Neoclassical style, including period plaster details and architectural elements, exquisite marble surfaces, custom mother-of-pearl tiling for the master bathroom and very detailed millwork.

great antiques from the French 40s, including pieces by Serge Roche, Gilbert Poillerat, René Prou, Jacques Adnet, Raymond Subes, Paul Follot, and many others. The antique furnishings are further complemented by great custom-made pieces designed by the architect and other designers such as Hervé Van der Straeten.

Happily ever after

Since the apartment was completely reimaged from scratch, the design is extremely cohesive, with small and large details coming together to create a sense of style and elegance.

The furniture collection, spread over the living and dining areas, library and bedroom, is a mix of



Design brief and aim

The design concept was to create a classic and elegant environment, while retaining a sense of comfort. The designers explored elements of 'rich styling', while fusing modernism and classicism.

How this was accomplished

The living space is a blend of formal and informal seating, adorned with rich marble flooring, an intricately detailed ceiling balanced with plush wall paneling, exclusive pieces of furniture, while a well-concealed grand pooja area forms an interesting part of the space. The dining area features wall paneling, decorative chandeliers, a well-crafted dining set; whereas the kitchen has a highly functional layout.



PRIVATE APARTMENT, PUNE

Metaphors, Pune

The individual bedrooms reflect the character of every user, while the bathrooms feature unique embellishments of marble, rich mosaic, mirror work and decorative glass. The terrace area is both a spot to unwind and host guests in a splendid outdoor environment, featuring intricate grills, pergolas, stone benches and lot of green touches.

Happily ever after

The designers achieved a high degree of comfort and style within the confines of an apartment setting.

How green was my project

The use of commercial woods and veneers, natural stone, water-based finishes, water-saving sanitary fixtures, energy-efficient lighting systems and HVAC systems, the use of automation, green walls and natural landscaping, all contributed towards making the apartment environment sensitive.





CHIP HOUSE, BENGALURU

Annkur Khosla Design Studio, Mumbai



Design brief and aim

The building is located in a green, gated community; the brief was to combine aesthetics and functionality to suit the needs of a three-member family (two adults and a child). The designers enjoyed complete freedom in terms of design sensibility.

How this was accomplished

The entrance foyer, featuring a vintage console, greets visitors in this ground floor apartment and leads to the spacious living and dining area. This space is enclosed by metal screens placed at the four corners, and also features a sofa and chairs, a custom made granite table and huge lamps. The German modular kitchen combines both style and function. The master bedroom is palatial;

with the standout feature of a bay window accompanying eclectic artefacts and design accessories, and is part of a suite comprising a generous master bathroom and walk-in wardrobe. The spirit of the apartment is further complemented by the furniture and art, which was all well curated and sourced from various international locations.

How green was my project

The use of LED lights, and the presence of a huge garden space, adds to the green credentials of the apartment.

Happily ever after

The living space blends traditional and contemporary accents and is perfectly suited to the needs of a family.





PRIVATE APARTMENT, HAMBURG, GERMANY

JOI-Design, Germany

Design brief and aim

The designers worked in tandem with their clients and used their imagination to translate the client's ideas and wishes into a stylish yet functional design that works holistically with their lifestyle and tastes.

How this was accomplished

The light-filled spatial structure was completely renovated with modern furniture used in juxtaposition with 50-year-old design classics, and then accentuated with Hermès textiles in neutral tones. Marble accents, complemented by a soothingly natural color palette, dominate the space.

A fireplace in the living room adds a warm touch to the space, while the kitchen is a compact yet functional room. The master bedroom opens out to an outdoor area, while the bathroom features a tub of natural stone, with indirect lights giving the room an atmospheric ambience.

Happily ever after

The vision was to create a calm and timeless sense of luxury which would be relevant in the 21st century.





SERVICED APARTMENT, FRANKFURT, GERMANY

JOI-DESIGN, Hamburg, Germany

Design brief and aim

The commission was to design flagship serviced apartments for a Singapore-based firm, with the brief to devise a modern concept that would tap into the 24/7 lifestyle of guests, as well as the dynamic vibe of its location in the city's new urban district.

How this was accomplished

The building features 153 studio and one-bedroom apartments. The designers reworked the guestrooms into

contemporary forms that not only give them a pleasing quirkiness; they also potentially inspire dwellers to think in creative ways. Every room is appointed with a personalised array of carefully selected furniture and artwork so that each guest has a uniquely curated experience.

The rooms feature nuanced shades of grey and white paint for a calm ambience; golden hues and high-style urban artworks create a feeling of polished glamour; while softer touches like a round area rug

with abstract floral motifs, create a cozy environment for longer-stay guests.

The tech-enabled studios are kitted out with a clean white multifunctional table with an integrated mirror, which functions as a dining, working and dressing space.

Happily ever after

The service apartments have been furnished with elegant, high-quality materials in a manner that reflects the fashion-savvy confidence of the young cosmopolitan guests who will call them 'home'.





THE TERRACED HOUSE, MUMBAI

Puran Kumar Architects, Mumbai

Design brief and aim

The family residing in this penthouse asked the designer for a complete renovation, aiming for a classic and neutral décor, to give their living space a fresh look.

How this was accomplished

The new look created for this 8,000 sq. ft. space did not incorporate many structural changes, and maintained the original feel and warmth of the apartment. The living space features contemporary furniture and adjoins a spacious dining area that opens on to the private garden. The garden looks out to a superb city view and lets in abundant natural light and air. A cozy couch

beneath the staircase creates an intimate nook for the family to relax in. The den was designed as a fusion of modern décor with a traditional Rajasthani feel to give it a unique ambience.

The design accents in the apartment feature Italian and imported rattan furniture, modern lighting and curated artworks. The imported glass in the bathroom turns opaque at the touch of a button for privacy, forming a modern installation.

Happily ever after

The essence of simplicity and fusion is maintained in the new look of the space.



VINTAGE VILLA, NAHAR'S AMRIT SHAKTI, MUMBAI

Ms. Manju Yagnik, Vice Chairperson, Nahar Group, Mumbai

Design brief and aim

Located near Powai Lake, the 'Villament' (villa - apartment) offers luxe living in a unique setting.

How this was accomplished

The space has been designed to evoke the ambience of a palatial European villa. The living room features wooden flooring and panelling, complemented by carefully complemented vintage style furniture, curated artefacts and a standout glass chandelier. The dining room is designed on an opulent style, with a lavish dining table surrounded by chairs with fleur-de-lis detailing.

The master bedroom features an ornate four-poster bed, flanked by vintage lampshades, and an antique fan. A chaise lounge stands before the elegantly mirrored wardrobes and the warmth of the wooden parquet flooring is well-suited to the grandeur of the room. Two bedrooms have direct access to the garden, which has a water body and a unique detail in the form of a seat made from a fallen log. There are two kitchens: a serving kitchen and a main kitchen.

Happily ever after

The design of the space offers an atmosphere of sheer luxury, and creates an ambience conducive to happy and healthy living.





BALI VILLA, NAHAR'S AMRIT SHAKTI, MUMBAI

Design brief and aim

The space for this 'villament' is generous inspiring the designer to capitalize on this while offering a luxury living space in one of Mumbai's prime locations.

How this was accomplished

This space is inspired by the art and culture of Bali, featuring gold tints and silk finish and natural silk wallpapers, and aims to create an atmosphere of peace and harmony. The living area is a picture of elegance and calm, featuring hardwood flooring, contemporary furniture and Oriental accents. The dining area features a carved table under a contemporary chandelier.

The master bedroom is spacious yet intimate, with intricate details that constitute a harmonious whole. The kids room, designed in a 'pirate' theme features beds in the shape of ships, while the aged planking of the wooden floor is meant to resemble a ship's deck.

The private garden features Bali-style furniture, including Buddha statues

and bamboo log finishes, and features a cabana, natural fire lamp, huge planters, a bamboo lamp, with a pebbled pathway leading through the lawn towards a lotus pond.

Happily ever after

The overall ambience of the apartment is that of 'quiet luxury' which fits neatly into a client's lifestyle.

Ms. Manju Yagnik, Vice Chairperson, Nahar Group, Mumbai



GRAND PARADI, MUMBAI

Seza - Seema Puri & Zarir Mullan Architects And Interior Designers, Mumbai

Design brief and aim

The project was developed with a minimalistic outlook, suiting the client's lifestyle.

How this was accomplished

A red vinyl feature wall greets guests at the entrance of the apartment, adding a pop of color to the space. The décor features cream velvet sectionals and off white dining chairs, complemented with B& B Italia orange accent chairs. Paintings and sculpture add

further design elements, while bronze hanging lights above the dining table contribute to a refined aesthetic. Oak veneer panelling in niches enhance the corners of the space.

The master bedroom overlooks a large green space, and also offers a bird's eye view of Marine Drive. The son's bedroom has a unique solid wood mosaic panel on one wall, and features deep wood flooring.

The apartment has an overall color palette of earth colours – rusts and browns, plus a generous sprinkling of vermillion, with Serpeggiante marble flooring used in the public areas.

Happily ever after

The careful selection of the material palette makes this home a haven of distinct luxury and style.





Design brief and aim

The apartment was designed to offer a high level of comfort, while reflecting the client's personality.

How this was accomplished

This 2,500 sq. ft. apartment features a large living and dining space, which opens up from a lounge to three bedrooms. The spacious living and dining area is designed in earthy shades of rust and brown velvet, with a bespoke center table featuring a semi-precious stone inlay. The dining area

features soft lighting from a Terzani light fixture with shimmering nickel chains that cast interesting shadows.

A small study room placed close to the entrance of the apartment has been furnished in black leather and wood, while the daughter's bedroom is in shades of lavender coupled with walnut wood flooring.

Happily ever after

The home as a space reflects the client's tastes and matches their lifestyle.

WOODLAND, MUMBAI

Seza - Seema Puri & Zarir Mullan Architects And Interior Designers, Mumbai

