

CW INTERIORS

India & Gulf's First B2B Interiors Magazine

• VOL 2 • NO 4 • DECEMBER 2009

• Rs 50 • USD 10 • Dhs 30

- The Leela Palace Kempinski, Udaipur
- Leo Burnett's office by Ministry of Design

projects by

- Dipen Gada and Associates
- Gayathri and Namith Architects
- Studio US Design
- Stonehenge Architects

Special feature on

doors and windows

ASAPP
MEDIA INFORMATION GROUP

www.asapp.in

Distinctive Doubles

Dipen Gada & Associates take up the challenge of designing a twin bungalow for two families with different requirements.



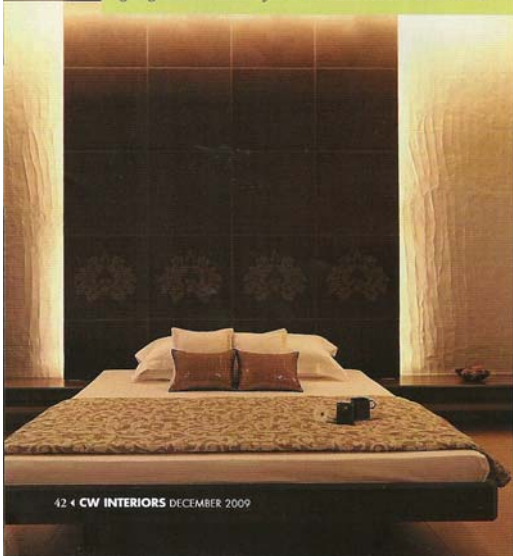
Hand-painted Bollywood posters and low-level lighting add elegance to the entertainment room in the Thakkar residence.

**private
QUARTERS**



A cabinet serves as a partition between the living room and the staircase at the Shah residence.

Motif engraving on the tile paneled bed back and the indirect lighting lends a meditative feel to the master bedroom at the Shaks.



Dipen Gada & Associates accepted the daunting task of designing the homes of two close friends with totally contrasting design needs – one desired functionality and the other focused on the fun-loving personality of its residents. “It’s easy to create luxury while working on large areas. The challenge here was to achieve a sense of opulence and openness within a restricted space (4,000 sq ft) and budget,” says Dipen Gada, Principal Architect, DGA.

EXTERIOR AFFAIRS

The exterior of the house reflects bilateral symmetry in its elevation, and its volumetric exterior is treated as apparent intersections of cubes and planes. A grey band acts as a weather shade, and drops down the front face as if holding up the projected balcony. The colour scheme is a mature white and grey against red exposed brickwork.

The compound wall is an integrated part of the overall architectural composition, while the main gate resem-

bles a wooden plane with carved inscriptions that make an interesting conversation piece.

FUNCTIONAL FAD

The contemporary, functional home of Rajesh Shah and his family reflects luxury and functionality, characterised by clean lines and simplicity. The minimalist main door contrasts against the traditional design of a bespoke, blackened brass bell that is an inclusive part of its design.

An elegant, wooden partition with built-in artwork distinguishes the foyer from the open dining area, providing extra privacy. The side facing the dining area, serves as a crockery unit and forms a niche (for diffused lighting) with a slab suspended from the ceiling. A built-in cabinet conceptualised as a solid block of wood cuts through the living room wall to create a niche for artefacts.

The ground floor powder room sports a gorgeous band of inlaid mirror terrazzo in beige ceramic tiling, complemented by black and white artwork. And a striking staircase with brown quartz granite treads on a white *kadi tappa* detail, with a polished wooden handrail. The staircase wall is clad with tiles and has a wooden band with hand-carved foliage covering its entire vertical length.

CLUTTER-FREE FUN

The children’s room is clutter-free, with a few dominating elements that differentiate the personality of the room. The simple yet playful, backlit, magenta headboard of the bed has rings cut-out from its fibre board sheet. The bed is dressed in a vibrant quilt, and clowns add a quirky dimension. A beige study unit stands along the wall and a cleverly treated heavy column seems like a part of the room’s composition.

WARM COMFORT

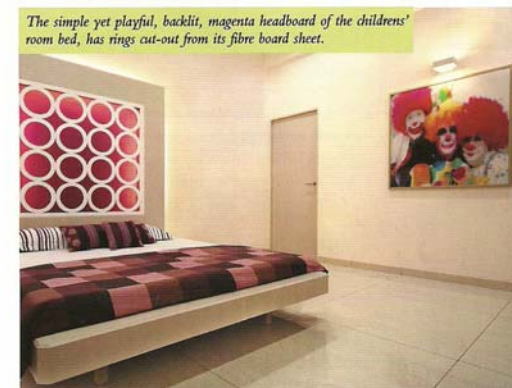
The master bedroom has warm brown tones creating a



Designers: Shalini Pereira, Dipen Gada (Principal) and Devang Patel.



The master bathroom at the Shah residence has a luxurious feel with dark wood cabinets and Italian marble platform.



The simple yet playful, backlit, magenta headboard of the children’s room bed, has rings cut-out from its fibre board sheet.

romantic and serene ambience. The headboard of motif-encrusted, rustic, brown tiles rises to the ceiling, while the bed and the side table resemble floating wooden ledges. The bedside walls are textured and bathed in soft, indirect light. A plane of etched, brown tiles that drops from the ceiling just over the study ledge, houses the concealed light.

The material pallet comprises walnut veneers, brown quartz granite and natural wood that highlights the pure white shell. The white walls highlight the richly coloured soft furnishings.

UNIDENTICAL TWIN

Although externally identical, the Thakkar residence differs slightly – it has a basement, a pooja area and a different staircase.

private QUARTERS



An elegant, wooden partition with built-in artwork distinguishes the foyer from the open dining area in the Shah residence.

The firm decided on a contemporary chic theme for this home. "The Thakkars wanted a mature and contemporary look with some playfulness that reflected their personality," says Dipen. "We used clean lines and simple forms, but incorporated embellishments such as rich fabrics, wallpapers and artwork to add a little whimsy."

STUNNING ENTRANCE

Here, the foyer sports a custom-made wooden partition with carved leaves. The living room displays chic white leather sofas against a chocolate coloured wall, which complements the dark-veneered partition. Vibrant tones of orange, red and brown artwork further enrich this chocolaty wall.



A skylight with pergolas above the stairwell allows filtered light into this area while the wooden panel with hand carved foliage pattern adds interest.

| Material | Description | Price | Sourced from | Contact |
|--|-----------------------------|---------------------|---------------------|-----------------------------|
| SHAH RESIDENCE | | | | |
| Vitrified tile flooring | RAK- glossy off white | Rs 125/sq ft. | Jain Marble | Tel: 0265-268 0016/659 2100 |
| Ceramic tile flooring for master bedroom | Wood look | | | |
| Ceramic tiles for staircase | Harmony- satin finish | | Bathworld | Tel: 0265-232 7076 |
| Laminate used in bedrooms | Green Lam | 14,000 per sheet | Procured by client. | |
| THAKKAR RESIDENCE | | | | |
| Berring marble flooring | Composite marble | Rs 300/sq ft. | Evershine Marble | Tel: 0261-226 2209/5 |
| Lined Jodhpur stone for bed back in master bedroom | | | Saibaba Marble | Tel: 0261-268 0694 |
| Ceramic tiles flooring | Wooden finish | | Jain Marble | Tel: 0265-268 0016/659 2100 |
| Laminates used for furniture | Green Lam and Royale Touche | Rs 14,000 per sheet | | |



The chocolate coloured wall in the living area of the Thakkar residence perfectly complements the white leather sofas and the dark veneered partition.

ZEN ZONES

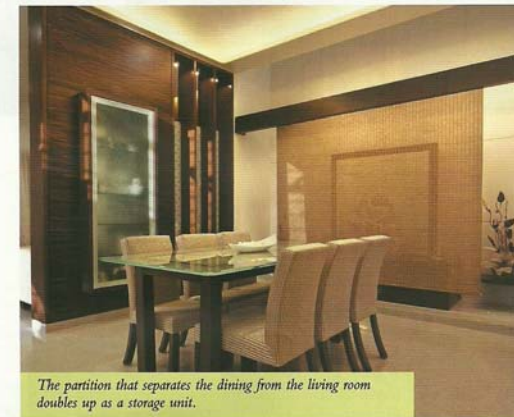
A partition of sheer fabric sandwiched between glass, doubling as a crockery storage unit, separates the living space from the dining area. Its translucent fabric provides privacy but maintains connectivity between the two spaces.

Set against a double height, textured wall with a skylight above, the pooja area appears dramatic on sunny days – pergolas in the slab create spectacular light and shadow patterns on its wall. They also visually connect the two levels of the house. A translucent, fabric blind demarcates the pooja zone from the neutral coloured, dining space.

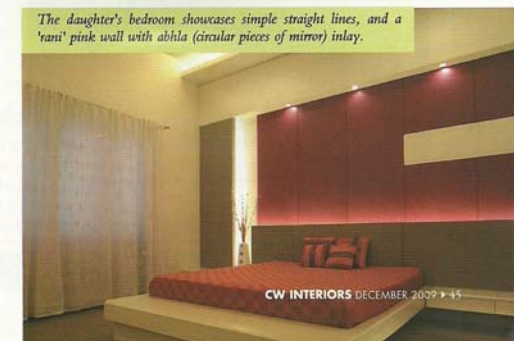
BOLD AND BEAUTIFUL

Every bedroom in this home exudes a distinct personality. Dark wood floors, dark veneers and rich furnishings give the first bedroom an opulent feel. The headboard and the TV wall are clad with grooved, rough Jodhpur stone, while cove lighting casts a soft, restful glow.

The daughter's bedroom showcases simple straight lines, and a 'rani' pink wall with *abhla* (circular pieces of mirror) inlay. "The idea was to create a mature, modern space with an underlying replace with "feminine touch". says Shalini, the co-designer.



The partition that separates the dining from the living room doubles up as a storage unit.



The daughter's bedroom showcases simple straight lines, and a 'rani' pink wall with *abhla* (circular pieces of mirror) inlay.



The twin bungalow makes a statement with its exposed brick, grey and white exterior.



Words of wisdom engraved into wooden panels at the main gate of both the houses are excellent conversation drivers.

ENTERTAINMENT AND EXERCISE

The basement unveils a Bollywood themed entertainment room, which boasts a home theatre and a gym. Here, a faux wooden floor adds warmth and cosiness, while textured, coffee-coloured walls display vintage, hand-painted Bollywood movie posters. The divan-style seating with its green upholstery and bright cushions reflect the colours of Bollywood. The gym is on an elevated platform, towards the back of the room. Its full length wall-to-wall mirror adds drama to this space. The bar counter below the stairwell is finished in dark laminate with coconut shell panelling on the front. "This is a perfect relaxing space for the family. It is also a wonderful place to entertain friends," says Thakkar. **i**

TEXT | SHALINI PEREIRA AND ADITI DAVE
PHOTO COURTESY | TEJAS SHAH

Contact: Dipen Gada & Associates, 3 White House,
44 Vishwas Colony, Alkapuri, Vadodara-390007.
Tel: 0265-231 1136 / 305 8754.
E-mail: dipen317@gmail.com Website: www.dipengada.com