

RNI No. 31940/77 Reg. No.MH/MR/South-83/2012-14 Date of Publication: 1st of every month. Posted at Patrika Channel Sorting office, Mumbai-400001 on 8th & 9th of every month

# Inside Outside

THE INDIA DESIGN MAGAZINE

[www.insideoutside.in](http://www.insideoutside.in)

ISSUE 348

JUNE 2014

₹ 100

**Profile: Anupama Kundoo**

**An office designed in Pune by Anjali and Ashwin Lovekar**

**A boutique hotel in Kochi by Joerg Drechsel**

**A villa in Dubai by Devjani Cox**

**COVER STORY** Dipen Gada designs a penthouse in Vadodara



Dipen Gada has designed a 7,000 sq ft contemporary penthouse in Vadodara with the feel of a villa. Adding to its luxurious feel is a 3,500 sq ft terrace and collection of art. Dovyeni Jajjekar discovers.

98 • India today June 2014



penthouse

## A Villa? No... a Penthouse!

Photography: Tejas Desai, Concept: The Architects

Nine ceramic plates by Vaidh Prasad on the burnt granite wall behind the sofa, create an understated geometry.

99 • India today June 2014



The double-height living room is an expansive space, with a muted colour palette imparting a restful quietude. Above the dining table, the light fixture is unlike anything you could have seen before. It has seven pendants combining illumination with the curving stems of money plants in glass holders, which contain water to sustain the creepers.

99 • India today June 2014

99 • India today June 2014



The small foyer has a mirror on one wall to give the illusion of more space. An asymmetrical bench provides seating for two, its curves defining a second plane. Further up, a dramatic sculpture by Ashit Das from his "Parichal" series makes an eloquent statement. A vertical glass partition, with a female figure etched on it alludes to the eternal male-female equation.

T

Two apartments have been combined to create this lavish pent-house... since the owner is also the builder of this building, he was able to mould everything to his requirements," says Dipan. The front door sets the tone for the customisation of the details in the home. Two brass plates with a patina finish run diagonally across the Sheesam wood of the door, the handle being created as part of the design at the casting stage. The small foyer has a mirror on one wall to give the illusion of more space. An asymmetrical bench provides seating for two, its curves drawing a second glance. "The client, Manish Patel, is a friend...and he gave me a free hand with an unlimited budget," says Dipan. "What more could I want?" The brief was to create an open, contemporary space and Manish interacted closely with Dipan on technical details. As one steps inside, a dramatic sculpture by Ashit Das from his "Parichal" series makes an eloquent statement. A vertical glass partition, with a female figure etched on it alludes to the eternal male-female equation. Further inside, the double-height living room is an expansive space, with a muted colour palette imparting a restful quietude. Above the dining table, the light fixture is unlike anything you could have seen before. It has seven pendants combining illumination with the curling stems of money plants in glass holders, which contain water to sustain the creepers. The painting on the wall



The kitchen is airy, bright, functional and all in white. Its size permitting the luxury of an island. All its cabinets were fabricated on site.

Adjacent to the dining table is by Heral Trivedi, while nine ceramic pieces by Vinod Datar on the burnt granite wall behind the sofa, create an understated geometry. Now, for the piece de resistance! Intriguing, with a come-hither aesthetic, four human figures in white scale the RCC wall alongside the staircase. "Sculpted out of fibre, they signify an upward journey and are located in a C-shaped niche created for the purpose," says Dipan. All the bedrooms are large, the parents' room adopting an age-appropriate aesthetic. Above the headboard of the bed, a small 12 in x 12 in painting has a large silk mount with mangoes on it. This floor houses two bedrooms, a pooja area, kitchen and dining area. The kitchen is airy, bright, functional and all in white, its size permitting the luxury of an island. All its cabinets were fabricated on site," says Dipan. On the second level, the daughter's suite is in blue, a black and white portrait on the wall behind the bed proclaiming right of ownership. The adjoining room is a meeting place for the friends of this student of architecture, so that they can study together. A drawing board supports their academic activity, while capacious "pockets" on the side of the sofa provide a practical hold-all for stationery. Two chairs are upholstered in blue denim, adding a young vibe to the space. The en suite bath is also in blue, a wall behind the wash basin hiding the shower and WC from immediate view. Now, for the spectacular terrace! Its 3,500 sq ft space accommodates a home theatre, so that part of the space can be used for entertainment even if it rains. The

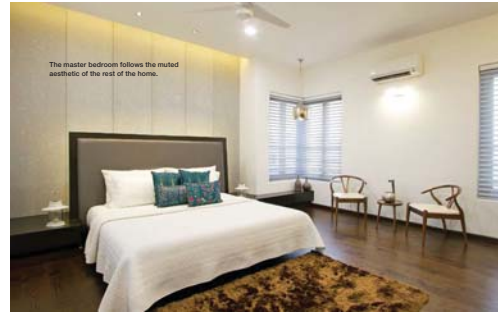


The adjoining room is a meeting place for the friends of this student of architecture, so that they can study together. A drawing board supports their academic activity, while separate pockets on the side of the sofa provide a practical hold-all for stationary. Two chairs are upholstered in blue denim, adding a young vibe to the space.

On the second level, the daughter's suite is in blue, a black and white portal on the wall behind the bed proclaiming right of ownership.



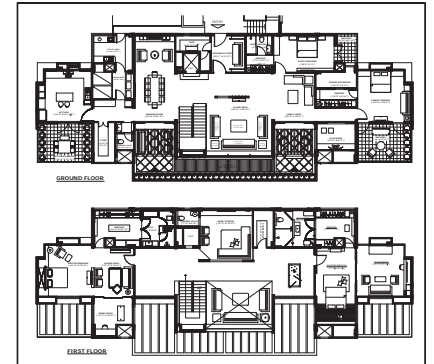
The en suite bath is also in blue, a wall behind the wash basin hiding the shower and WC from immediate view.



The master bedroom follows the muted aesthetic of the rest of the home.



The parents' room, adopting an age-appropriate aesthetic. Above the headboard of the bed, a small 12 in x 12 in painting has a large silk mount with mangos on it.



## penthouse



The spectacular 3,500 sq ft terrace accommodates a home theatre, its lounge opening up to a lush green garden with a water body. The open-to-sky area houses a white gazebo.

### FACT FILE:

**Client's Name:** Manish Patel  
**Built up area:** Level 1 & Level 2 – 7,000 sq ft  
**Terrace area:** 3,500 sq ft  
**Duration:** 18 months  
**Principal Designer:** Dipen Gada  
**Design Team:** Gopal Patel and Arpit Jain  
**Site Coordinator:** Chetan Builders

lounge area opens up to a lush green garden with a water body. The open-to-sky area houses a white gazebo and the limestone on its walls imparts a pale pistachio colour. Hexagonal white flooring in china glass covers part of the floor. 'This is a particularly attractive space on a full moon night,' says Dipen, sounding like this may be his favourite spot in the house. 